

GAME

EST. 1975

WORK HARD. SHOW YOUR GRIT



2022

GAMESPORTSWEAR.COM
GAMWORKWEAR.COM

  @GAMESPORTSWEAR

 @GAMESPORTSWEARWORKWEAR





NEW!
8550E
PG 22

NEW AT GAME!



KEYS TO ICONS



Meets ANSI/ISEA standards: Class 1, Class 2 or Class 3



Meets ANSI/ISEA color standards



Meets ANSI/ISEA Trousers Class E color standards



Moisture Wicking Fabric



Soil Release properties reduce staining



Waterproof Fabric



Available in BIG/TALL sizing up to 5XL



Available in Youth Sizing



Provides easy access for embellishment



Proudly made in the USA



Custom made in the USA

CONTENTS

- 6 High-Visibility ANSI/ISEA Garment Requirements
- 7 Workwear Decoration and Imprint Specifications
- 10 High-Visibility Outerwear
- 18 High-Visibility Rainwear
- 22 High-Visibility Fleece
- 26 High-Visibility Tees & Polos
- 32 High-Visibility Vests
- 40 Enhanced Visibility
- 39 Work Shirts
- 60 Outerwear
- 71 Varsity Jackets
- 88 Bomber Jackets
- 90 Custom Apparel Options
- 96 Decoration Order Forms
- 98 Index



WOOL VARSITY GARMENTS PG 71

WORKWEAR

DECORATION

SERVICES

ONE-STOP

SHOP



**WITH FULL-SERVICE IN-HOUSE CAPABILITIES, WHY SHOP ANYWHERE ELSE?
WE HANDLE ALL YOUR WORKWEAR AND DECORATION NEEDS!**



CUSTOM IMPORTED APPAREL

Take your concepts to another level, with industry leading support.

Our team will work directly with you to develop and achieve the perfect customized apparel.

Products ranging from:

- WORKWEAR
- SPORTSWEAR
- OUTERWEAR
- SAFETY APPAREL



**FROM
CONCEPT
TO REALITY
IN 10 - 12
WEEKS**

Timeframe may vary depending on complexity & time of year

Choosing the right high-visibility safety apparel creates a safer work environment for your workers. Learn about the various types of safety classes, requirements and garment options below.

Definition

Specs

Some Examples of Use

Styles



PERFORMANCE CLASS E

- Class E apparel applies to trousers and shorts and creates a high-visibility ensemble.
- When Class E bottoms are worn with a Class 2 or 3 garment, the overall classification for the ensemble is Class 3.

Background material:
465 in² (0.30 m²)

Reflective tape:
108 in² (0.07 m²)

Minimum width of reflective tape:
2 in (50 mm)

- Roadway construction personnel
- Flaggers
- Utility workers
- Survey crews
- Construction vehicle operators

PANT
1450, p21
1555E, p19



PERFORMANCE CLASS 1

- Intended for use in activities that permit the wearer's full and undivided attention to approaching traffic.
- There should be ample separation of the worker from traffic, which should be traveling no faster than 25 miles per hour.

Background material:
217 in² (0.14 m²)

Reflective tape:
155 in² (0.10 m²)

Minimum width of reflective tape:
2 x 1 in (25 mm) or 2 in (50 mm)

- Warehouse workers
- Roadside "right of way" or sidewalk maintenance workers
- Shopping cart retrievers

VESTS
I-35E, p34



PERFORMANCE CLASS 2

- Intended for use in activities where greater visibility is necessary during inclement weather conditions or in work environments with risks that exceed those for Class 1.
- Also covers workers who perform tasks that divert their attention from approaching traffic or that put them in close proximity to passing vehicles traveling at 25 miles per hour or higher.

Background material:
775 in² (0.50 m²)

Reflective tape:
201 in² (0.13 m²)

Minimum width of reflective tape:
1.375 in (35 mm)

- Roadway construction
- Utility and railway workers
- Survey crews
- School crossing guards
- Delivery vehicle drivers
- Trash collection and recycling operations
- Airport ground crews and baggage handlers

T-SHIRTS
221R, online
235R, p26
260E, p27
2201, p29
2255, p30
2350, p31

VESTS
I-44, p35
I-65, p32
I-70, p33
I-84, p36
I-85, p37
I-684, p38

FLEECE
8755, p23

JACKETS
3555, p15



PERFORMANCE CLASS 3

- Provides the highest level of visibility and is intended for workers who face serious hazards and often have high task loads that require attention away from their work.
- Garments for these workers should provide enhanced visibility to more of the body, such as the arms and legs.

Background material:
1240 in² (0.80 m²) (0.20 m²)

Reflective tape:
310 in²

Minimum width of reflective tape:
2 in (50 mm)

- Roadway construction personnel
- Flaggers
- Utility workers
- Police and traffic control
- Survey crews
- Construction vehicle operators
- Emergency response personnel
- Workers in low light or hazardous conditions

T-SHIRTS
275R, p28

FLEECE
825, p25
865E, p22
8260, p25
8550E, p22

VESTS
I-495E, p39
I-678E, p38

JACKETS
1275, pg14
1320E, pg10
1370, pg13
1333, pg12
1340, pg21
1350, pg16
1355, pg 17
1385, pg14
1655E, p19
1865E, p11
4400, pg20



PUBLIC SAFETY VEST 207-2015

- Based on an ANSI/ISEA 107-2015 with modifications for public safety officials.
- Design criteria allows public safety vests to provide access to belt-mounted equipment (such as guns and radios) and allow vests to have the ability to tear away from the body.
- Allows for shorter vests that offer users access to their tactical equipment.

Background material:
450 in² (0.29 m²)

Reflective tape:
201 in² (0.13 m²)

Minimum width of reflective tape:
2 in (50 mm)

- The new standard primarily is geared for the law enforcement and emergency response communities.

VEST
I-684, p38

HIGH-VISIBILITY IMPRINT AREA SPECIFICATIONS*

For all garments with reflective striping on shoulders and backs (DIMENSIONS ARE SHOWN IN INCHES)

JACKETS

Style	Left Chest	Right Chest	BACK MEASUREMENTS		
			Height (in)	Width (in)	Below Tape h x w (in)
825	Y	Y	14	13	
865E	Y	Y	14	12	
1275	Y	Y	14 1/2	9	
1320E	Y	N	14	12	
1333	Y	N	13	13	
1340	Y	N	12 1/2	13	
1350/1355 inside jacket	Y	N	11	11	
1350/1355 outside jacket	Y	N	13	14	
1370	Y	N	13	12	
1385	Y	N	13	11	
1390	Y	Y	13	11	
1655E NEW!	N	N	16	12	8 x 16
1865E NEW!	N	N	12	11 1/2	5 x 16
3555	Y	Y	7 1/2	14	9 x 14
4400	Y	Y	14	11 1/2	
8260	Y	Y	14 1/2	12	
8310 NEW!	N	N	13	11 1/2	4 x 16
8550E NEW!	N	N	14	11 1/2	8 x 16
8755	Y	Y	13 1/2	11 1/2	
8775	Y	Y	13	11 1/2	
9250E NEW!	Y	Y	12	12 1/2	12 x 16

POLOS & TEES

Style	Left Chest	Right Chest	BACK MEASUREMENTS	
			Height (in)	Width (in)
221R	N	N	14	10
235R	N	N	13	10 1/2
260E NEW!	N	N	13	10
275R	N	N	15	10 1/2
2201	N	N	14	9 1/2
2255	Y	Y	12	10
2350	Y	Y	14	14

VESTS

Style	Left Chest	Right Chest	BACK MEASUREMENTS		
			Height (in)	Width (in)	Below Tape h x w (in)
I-35E	Y	Y	15	10 1/2	9 x 23 1/2
I-44	Y	Y	11	8	4 x 23
I-65	Y	Y	14 1/2	10 1/2	9 x 23
I-70	Y	Y	15	10 1/2	9 x 23
I-84	Y	Y	13 1/2	8 1/2	8 x 23
I-85	N	Y	13 1/2	9	8 x 24
I-495E NEW!	N	N	15	8 1/2	8 x 1
I-678E	Y	Y	24	8	No Space
I-684	Y	N	13 1/2	9	No Space

*NOTE: Dimensions of Maximum Back Print Area are for Size Small Garments. Expect slightly larger print area for larger sizes.

Logo/Print Placement Suggestions:

Back of vest between the shoulder blades



Back of vest below the horizontal tape



1450



I-35E



3555



865E



I-684



LOGO ALLOWANCES HAVE BEEN AMENDED

Logo allowances have been incorporated into the ANSI/ISEA 107-2015 standard, which allows for a company logo of limited size to be added without being required to deduct the background area of the logo.

Identification panels, lettering and logos of contrasting non-compliant material shall not exceed a total of 465 cm² (72in²) on the front and/or rear of the HVSA and such total amount may contribute to the minimum amount of visible background material.

FLAME RESISTANT (FR) LABELING

ANSI/ISEA 107-2015 rated garments made from polyester or any non-inherently flame resistant fabric will require the following statement: None of our garments are flame resistant as defined by ANSI/ISEA 107-2015 Section 10.5.

GAME certifies that all of its ANSI/ISEA 107-2015 garments still provide the same level of protection and visibility and are certified to meet the new ANSI/ISEA-2015 standards. Changes in the revised standard only affect categorization and labeling. GAME proudly offers over 30 ANSI/ISEA certified styles.

HIGH-VISIBILITY

BRAND NEW COLLECTIONS



NEW!

8550E, PG 22

865E, PG 22



UNRIVALED QUALITY

EVERY JOB NOW HAS A COLLECTION...

As the High-Visibility market continues to expand, new styles and collections are born. GAME is proud to expand its offerings to now include new Econo priced items, as well as a brand **NEW!** enhanced visibility line...

G-CLIPSE LINE™

New industries, new solutions.

High-Visibility options for those extra dirty tasks. Explore the new G-Clipse line and let these garments work for you.

ECONO COLLECTION

When it comes to quality and safety, we never compromise. Thru tireless efforts of our inhouse purchasing and development team, we're proud to expand our brand new ECONO collection.

High quality materials and construction that meet ANSI/ISEA color standards, at affordable everyday prices.



1320E

ECONO

THE ECONO BLACK BOTTOM BOMBER JACKET

Durable cold weather protection with a black bottom to reduce staining

- Meets ANSI/ISEA 107-2020 Class 3 color standards
- 100% breathable polyester 300 denier Oxford (100% black nylon Oxford)
- Sealed seams for wind and waterproofing
- Black quilted polyester lining
- Wind and waterproof hood with drawstring concealed in the collar with a Velcro® closure
- Black bottom to reduce staining, **on front only**
- 2" silver/grey reflective tape
- Full zipper to top of collar with outside storm flap
- Outer right chest flap pocket
- Front pockets with cover closure
- Left chest mic clip
- Machine washable/Imported
- For printable area specifications, see pgs 6-7.



SIZES: S - 5XL / TALL: L - 3XL

MSRP: \$54.50



030 - FLUORESCENT YELLOW WITH SILVER/GREY REFLECTIVE TAPE



1865E

ECONO

NEW!

THE CLASS 3 BLACK BOTTOM PARKA

Maximum comfort and stain protection with black bottom detailing

- Meets ANSI/ISEA 107-2020 Class 3 color standards
- 100% polyester 300 denier Oxford PU coated heavy duty fabric with black quilted polyester lining
- Sealed seams for wind and waterproofing
- Black bottom to reduce staining
- 2" silver/grey reflective tape
- Two front pockets with storm flaps
- Hidden hood
- Velcro® closures on cuffs for adjustable sleeve length
- Machine washable/Imported
- For printable area specifications, see pgs 6-7.



SIZES: S - 5XL
MSRP: \$57.50



030 - FLUORESCENT YELLOW WITH SILVER/GREY REFLECTIVE TAPE

1333

DELUXE

THE NAVIGATOR JACKET

Heavyweight polyester and fleece lining keep you going all day

- Meets ANSI/ISEA 107-2020 Class 3 color standards
- 2" silver/grey reflective tape
- Heavyweight polyester, wind and water-resistant
- Black non-pill fleece lining
- Full zip to top of collar with outside storm flap
- Outer right chest flip pocket, front zipper pockets with cover closure, inside zipper pockets and side access zippers
- Machine washable/Imported
- For printable area specifications, see pgs 6-7.



SIZES: S - 5XL / TALL: L - 3XL

MSRP: \$87.00



030 - FLUORESCENT YELLOW WITH SILVER/GREY REFLECTIVE TAPE



1370

DELUXE

THE MUNICIPALITY BOMBER JACKET WITH HIDEAWAY HOOD

Breathable polyester Oxford with wind/water resistance keeps you comfortable and protected

- Meets ANSI/ISEA 107-2020 Class 3 standards
- 2" 3M silver/grey reflective tape
- 100% breathable polyester Oxford and 100% black nylon oxford, **on front only**
- Wind and water resistant/Black non-pill fleece lining
- Full zip to top of collar with outside storm flap
- Outer right chest flap pocket, front pockets with closure cover, side access zippers, inside zipper pockets, radio mic clips on shoulders
- Machine washable/Imported
- For printable area specifications, see pgs 6-7.



SIZES: S - 5XL / TALL: L - 3XL
MSRP: \$101.00



030 - FLUORESCENT YELLOW WITH SILVER/GREY REFLECTIVE TAPE AND BLACK BOTTOM



030 - FLUORESCENT YELLOW W/ SILVER/GREY REFLECTIVE TAPE BORDERED BY FLUORESCENT ORANGE STRIPES



030 - FLUORESCENT YELLOW W/ SILVER/GREY REFLECTIVE TAPE BORDERED BY FLUORESCENT ORANGE STRIPES

1275

DELUXE

THE HI-VIS QUILTED JACKET

Built-in protection from the elements

- Meets ANSI/ISEA 107-2020 Class 3 color standards
- Wind-resistant nylon taffeta shell
- Black bottom to reduce staining, **on front only**
- 2" silver/grey reflective tape with 1" contrast color stripes on sides of reflective tape
- 100% polyester rib knit collar, cuff, bottom band (back only) and shoulder gussets
- 5 oz poly-fill lining with thermal knit backing
- Full front zipper/Two outer pockets
- Machine washable/Imported
- For printable area specifications, see pgs 6-7.



SIZES: S - 5XL
MSRP: \$62.00

1385

DELUXE

TWO-TONE BLACK BOTTOM BOMBER JACKET

Black bottom detailing endures the toughest jobs

- Meets ANSI/ISEA 107-2020 Class 3 color standards
- 2" silver/grey reflective tape with 1/2" contrasting orange stripe and reflective piping on shoulders and arms
- 100% breathable polyester Oxford
- Black bottom to reduce staining, **on front only**
- Black non-pill fleece lining/Wind and water resistant
- Full zip to top of collar with outside storm flap
- Outer right chest flap pocket, front pockets with cover closure, side access zippers and inside zipper pockets
- Hide-away hood in collar, with reflective piping
- Machine washable/Imported
- For printable area specifications, see pgs 6-7.



SIZES: S - 5XL / TALL: L - 3XL
MSRP: \$89.50

3555

DELUXE

THE RESCUE JACKET

Maximum performance and comfort for emergency responders

OUTER JACKET FEATURES

- All-weather, 3-in-1 high-visibility jacket
- Meets ANSI/ISEA 107-2020 Class 2 standards, 1" silver/grey reflective tape
- 100% polyester PU coated breathable fabric
- Sealed seams for wind and waterproofing
- Hand-warmer pockets and inside mesh pocket
- Velcro® closures on cuffs for adjustable sleeve length
- Left chest zippered storage pocket with radio pocket
- Right chest zippered storage pocket
- Fleece lined collar/detachable peaked hood
- Two front pockets with storm flaps
- Two inside pockets
- Velcro® ID panel on right chest
- Abrasion panels on shoulders

INNER JACKET FEATURES

- 100% polyester polar fleece with Taslan nylon accents
- Unlined/mid hip length
- Left/right chest storage pockets
- Open bottom hem with adjustable bungee drawstring
- Imported
- Machine washable
- For printable area specifications, see pgs 6-7.

CLASS 2

SIZES: S - 5XL
MSRP: \$257.00



400 - FLUORESCENT YELLOW WITH NAVY AND SILVER/GREY REFLECTIVE TAPE



BACK OF JACKET



INNER JACKET



600 - FLUORESCENT YELLOW WITH RED AND SILVER/GREY REFLECTIVE TAPE



BACK OF JACKET



INNER JACKET



700 - FLUORESCENT YELLOW WITH ROYAL AND SILVER/GREY REFLECTIVE TAPE



BACK OF JACKET



INNER JACKET

1350

DELUXE

THE 6-IN-1 JACKET

6-in-1 protection ready to tackle any job

OUTER JACKET FEATURES

- Meets ANSI/ISEA 107-2020 Class 3 color standards with 2" silver/grey reflective tape
- 100% polyester PU coated breathable fabric
- Sealed seams for wind and waterproofing
- Radio pocket with flap and D-ring underneath right chest
- Radio mic clips on shoulders
- Fleece lined collar/Detachable peaked hood
- Two front pockets with storm flaps and reflective piping
- Two hand warmer pockets

INNER JACKET FEATURES

- Meets ANSI/ISEA 107-2020 Class 2 color standards with 2" silver/grey reflective tape
- Radio pocket with flap and D-ring underneath on right chest
- Black diamond quilt lining with zip off sleeves
- Reversible to make quilted jacket or vest
- Two front pockets
- For printable area specifications, see pgs 6-7.



SIZES: S - 5XL
MSRP: \$165.00

030 - FLUORESCENT YELLOW WITH SILVER/GREY REFLECTIVE TAPE



ANSI/ISEA 107-2015 CLASS 3 JACKET



CLASS 3 OUTER SHELL RAIN PARKA



ANSI/ISEA 107-2015 CLASS 2 VEST WITH QUILTED SLEEVES



ANSI/ISEA 107-2015 CLASS 2 VEST



QUILTED VEST



QUILTED JACKET

1355

DELUXE

THE BLACK BOTTOM 6-IN-1 JACKET

6-in-1 protection with a black bottom to reduce staining

OUTER JACKET FEATURES

- Meets ANSI/ISEA 107-2020 Class 3 color standards with 2" 3M silver/grey reflective tape
- 100% polyester PU coated breathable fabric
- Sealed seams for wind and waterproofing
- Radio pocket with flap and D-ring underneath right chest
- Radio mic clips on shoulders
- Fleece lined collar/Detachable peaked hood
- Two front pockets with storm flaps and reflective piping
- Two hand warmer pockets
- Black bottom to reduce staining, **on front only**

INNER JACKET FEATURES

- Meets ANSI/ISEA 107-2020 Class 2 color standards with 2" silver/grey reflective tape
- Radio pocket with flap and D-ring underneath right chest
- Black diamond quilt lining with zip off sleeves
- Reversible to make quilted jacket or vest
- Two front pockets
- For printable area specifications, see pgs 6-7.



SIZES: S - 5XL
MSRP: \$165.00

030 - FLUORESCENT
YELLOW WITH SILVER/GREY
REFLECTIVE TAPE



ANSI/ISEA 107-2015
CLASS 3 JACKET



CLASS 3 OUTER
SHELL RAIN PARKA



ANSI/ISEA 107-2015 CLASS 2 VEST
WITH QUILTED SLEEVES



ANSI/ISEA 107-2015
CLASS 2 VEST



QUILTED VEST



QUILTED JACKET

RAINWEAR

TOUGH JOBS REQUIRE TOUGH GEAR

NEW!

1655E, PG 19

1865E, PG 20

1340, PG 21

NEW!

1555E, PG 19



030 - FLUORESCENT
YELLOW WITH SILVER/GREY
REFLECTIVE TAPE

1655E

ECONO

NEW!

THE ECONO HI-VIS RAIN JACKET

Tough rain protection at an affordable price

- Meets ANSI/ISA 107-2020 Class 3 color standards
- 100% polyester 150 denier Oxford PU coated fabric
- Sealed seams for wind and waterproofing
- 2" silver/grey reflective tape
- 3/4 hip length
- Hide-away hood in collar
- Two front pockets with snap closure
- Elastic cuff for comfort
- Oversized – perfect for layering!
- Machine washable/Imported
- For printable area specifications, see pgs 6-7.



SIZES: S - 5XL
MSRP: \$40.00

1555E

ECONO

NEW!

THE ECONO BLACK BOTTOM RAIN PANT

Minimize staining with black bottom pants

- Meets ANSI/ISEA 107-2020 Class E color standards
- 2" silver/grey reflective tape
- 100% polyester 150 denier Oxford PU coated fabric
- Sealed seams for wind and waterproofing
- Elasticized waistband with inside drawstring
- Adjustable snap at ankles
- Oversized – perfect for layering!
- Machine washable/Imported



SIZES: S - 5XL
MSRP: \$24.00



030 - FLUORESCENT YELLOW WITH SILVER/GREY REFLECTIVE TAPE



030 - FLUORESCENT YELLOW WITH SILVER/GREY REFLECTIVE TAPE

4400

DELUXE

THE ULTIMATE YEAR ROUND PROTECTOR WITH HIDDEN HOOD

Stay safe and dry in every season

- Meets ANSI/ISEA 107-2020 Class 3 color standards
- 2" 3M silver/grey reflective tape
- Durable 100% polyester 150 denier, PU coated
- Sealed seams for waterproofing
- 100% nylon brushed tricot lining
- Snap front closures/Self material lay down collar
- Hood is wind and water proof with drawstring, concealed in the collar with Velcro® closure
- Heavy duty lined pockets for durability
- For printable area specifications, see pgs 6-7.



SIZES: S - 5XL
MSRP: \$59.00

1865E

ECONO

NEW!

THE CLASS 3 BLACK BOTTOM PARKA

Maximum comfort and stain protection with black bottom detailing

- Meets ANSI/ISEA 107-2020 Class 3 color standards
- 100% polyester 300 denier Oxford PU coated heavy duty fabric with black quilted polyester lining
- Sealed seams for wind and waterproofing
- Black bottom to reduce staining
- 2" silver/grey reflective tape
- Two front pockets with storm flaps
- Hidden hood
- Velcro® closures on cuffs for adjustable sleeve length
- Machine washable/Imported
- For printable area specifications, see pgs 6-7.



SIZES: S - 5XL
MSRP: \$57.50



1340

DELUXE

THE RAIN JACKET

Rain protection for the toughest weather

- Meets ANSI/ISEA 107-2020 Class 3 color standards
- 2" 3M silver/grey reflective tape
- Sealed seams for wind and waterproofing
- 100% polyester PU coated fabric
- 3/4 length
- Hide-away hood in collar
- Storm flap pockets and radio pocket on right chest
- Radio mic clips on shoulders
- Velcro® cuff closures
- Imported
- For printable area specifications, see pgs 6-7.



SIZES: S - 5XL
MSRP: \$77.00

1450

DELUXE

THE RAIN PANT

Stay protected with easy on and off

- Meets ANSI/ISEA 107-2020 Class E color standards
- 2" 3M silver/grey reflective tape
- 100% polyester PU coated fabric
- Waterproof, fits easily and comfortably over pant
- Elasticized waistband with inside drawstring
- Easy entry side pockets
- Leg zipper for easy on and off
- Adjustable snap at ankles
- Imported



SIZES: S - 5XL
MSRP: \$39.50



030 - FLUORESCENT YELLOW WITH SILVER/GREY REFLECTIVE TAPE AND BLACK BOTTOM



030 - FLUORESCENT YELLOW WITH SILVER/GREY REFLECTIVE TAPE AND BLACK BOTTOM

865E **ECONO**

THE ECONO HOODIE WITH SEGMENTED REFLECTIVE TAPE

Segmented reflective tape provides easy movement on the job

- Meets ANSI/ISEA 107-2020 Class 3 color standards
- 9.5 oz 100% spun polyester fleece
- Lined self material hood with drawstring and oversized to accommodate head gear
- Body has generous cut for layering
- Black bottom to reduce staining, **on front only**
- Two front slash pockets
- Moisture wicking
- Soil release properties to reduce staining
- Full length heavy duty zipper
- 2" silver/grey segmented reflective tape
- Color fastness
- Machine washable/Imported
- For printable area specifications, see pgs 6-7.



SIZES: S - 5XL
MSRP: \$47.00

8550E **ECONO**

NEW!

THE NO ZIPPER ECONO HOODIE WITH SEGMENTED REFLECTIVE TAPE

Easy pullover styling and an oversize pouch pocket provide all day comfort

- Meets ANSI/ISEA 107-2020 Class 3 color standards
- 12 oz 100% spun polyester fleece
- Lined self material hood with drawstring and oversized to accommodate head gear
- Body has generous cut for layering
- Black bottom to reduce staining, **on front only**
- Oversized kangaroo pouch pocket
- Moisture wicking
- Soil release properties to reduce staining
- 2" silver/grey segmented reflective tape
- Color fastness
- Machine washable/Imported
- For printable area specifications, see pgs 6-7.



SIZES: S - 5XL
MSRP: \$46.00

8755

DELUXE

G-CLIPSE SURVIVOR WORK SHIRT WITH CONTRASTING & SEGMENTED TAPE

Segmented reflective tape for superior mobility
in two versatile color options

- ANSI/ISEA 107-2020 Class 2 color standards (Fluorescent Yellow only)
- 9 oz 100% pique anti-pilling fleece
- 2" grey/silver segmented reflective tape on 3" contrasting fluorescent yellow/black stripe
- Front slash pockets
- Deep mic clips on shoulders
- Zip turtleneck with fold over zipper stop
- Machine washable/Imported
- For printable area specifications, see pgs 6-7.

CLASS 2

SIZES: S - 5XL
MSRP: \$58.00



100 - BLACK WITH SILVER/GREY SEGMENTED REFLECTIVE TAPE ON CONTRASTING FLUORESCENT YELLOW STRIPE

030 - FLUORESCENT YELLOW WITH SILVER/GREY SEGMENTED REFLECTIVE TAPE ON CONTRASTING BLACK STRIPE



030 - FLUORESCENT YELLOW



030 - FLUORESCENT YELLOW WITH SILVER/GREY REFLECTIVE TAPE

8210

DELUXE

SOLID HI-VIS HOODIE

A stand out on the job with a generous cut for layering

- Meets ANSI/ISEA color standards
- 12 oz 100% spun polyester fleece, feels like soft cotton
- Unlined with a generous cut for layering
- Wicks moisture away from the body for a dry comfortable feel
- Soil release properties reduce staining
- Lined self material hood with drawstring, oversized to accommodate headgear
- Color fastness
- Machine washable/Imported



SIZES: S - 5XL
MSRP: \$48.00

8310E

ECONO

NEW!

THE 100% POLYESTER ECONO CREW NECK SWEATSHIRT

Class 3 safety features keep you safe, GAME quality keeps you comfortable

- Meets ANSI/ISEA 107-2020 Class 3 color standards
- 12 oz 100% spun polyester fleece, feels like soft cotton
- Body has generous cut for layering
- Elastic rib, waistband and cuffs
- Moisture wicking
- Soil release properties to reduce staining
- 2" silver/grey reflective tape
- Color fastness
- Machine washable/Imported
- For printable area specifications, see pgs 6-7.



SIZES: S - 5XL
MSRP: \$39.00



030 - FLUORESCENT YELLOW WITH SILVER/GREY REFLECTIVE TAPE

825 DELUXE

THE MACK HOODIE

Performance ready for any job

- Meets ANSI/ISEA 107-2020 Class 3 color standards
- 12 oz 100% spun polyester fleece
- Lined hood, unlined body with generous cut for layering
- Moisture wicking
- Soil release properties to reduce staining
- 2" silver/grey reflective tape
- Full-length zipper and drawstring on hood
- Color fastness
- Machine washable/Imported
- For printable area specifications, see pgs 6-7.



SIZES: S - 5XL
MSRP: \$64.00



030 - FLUORESCENT YELLOW WITH SILVER/GREY REFLECTIVE TAPE AND BLACK BOTTOM

8260 DELUXE

THE MAINTENANCE HOODIE

Durable black bottom reduces staining

- Meets ANSI/ISEA 107-2020 Class 3 color standards
- 12 oz 100% spun polyester fleece
- Lined self material hood with drawstring and oversized to accommodate head gear
- Body has generous cut for layering
- Moisture wicking
- Soil release properties and black bottom to reduce staining, **on front only**
- 2" silver/grey reflective tape
- Full length heavy duty zipper
- Machine washable/Imported
- For printable area specifications, see pgs 6-7.



SIZES: S - 5XL
MSRP: \$64.00

235R

DELUXE

VENTILATED DELUXE TEE WITH SEGMENTED REFLECTIVE TAPE

Segmented reflective tape provides maximum comfort

- Meets ANSI/ISEA 107-2020 Class 2 color standards
- 100% soft spun birdseye polyester, feels like cotton
- Lightweight polyester mesh ventilation panels under arms, allow for optimal air circulation
- Wicks moisture away from the body
- Soil release properties reduce staining
- 2" silver/grey segmented tape, heat sealed to the garment so it moves with you for added comfort
- Color fastness up to 25 washes
- Machine washable/Imported
- For printable area specifications, see pgs 6-7.



SIZES: S - 5XL

MSRP: \$24.00



UNDERARM
MESH
VENTILATION



030 - FLUORESCENT YELLOW WITH
SILVER/GREY REFLECTIVE TAPE



260E

ECONO

NEW!

THE 100% POLYESTER ECONO TEE

Our new Class 2 tee stands tall for any job

- Meets ANSI/ISEA 107-2020 Class 2 color standards
- 100% polyester construction
- Wicks moisture away from the body
- Soil release properties to reduce staining
- 2" silver/grey reflective tape
- Color fastness
- Machine washable/Imported



SIZES: S - 5XL

MSRP: \$16.00



030 - FLUORESCENT YELLOW WITH SILVER/GREY REFLECTIVE TAPE



030 - FLUORESCENT YELLOW MEETS ANSI/ISEA COLOR STANDARDS



030 - FLUORESCENT YELLOW WITH SILVER/GREY REFLECTIVE TAPE BORDERED BY FLUORESCENT ORANGE STRIPES

214 DELUXE

THE HYDRO-WICK DELUXE TEE

Versatile and durable everyday tee

- Spun birdseye polyester microfiber, feels like soft cotton
- Wicks moisture away from the body
- Soil release properties reduce staining
- Color fastness
- Machine washable/Imported



SIZES: S - 6XL

MSRP: \$13.00 (LOWER PRICE!)

275R DELUXE

GAME-WICK™ TWO-TONE CLASS 3 TEE

Stand out with contrasting reflective tape

- Meets ANSI/ISEA 107-2020 Class 3 color standards
- 100% spun birdseye polyester microfiber feels like soft cotton
- Wicks moisture away from the body for a dry comfortable feel
- Soil release properties reduces staining
- Convenient left chest pocket
- 2" silver/grey reflective tape with 1/2" contrasting orange stripe
- Color fastness
- Machine washable/Imported
- For printable area specifications, see pgs 6-7.



SIZES: S - 5XL

MSRP: \$21.00

2201

DELUXE

THE BLACK BOTTOM HI-VIS TEE

Black bottom increases durability and reduces staining

- Meets ANSI/ISEA 107-2020 Class 2 color standards
- Spun birdseye polyester microfiber, feels like soft cotton
- Black bottom to reduce staining, **on front only**
- Wicks away moisture
- Soil release properties and black bottom to reduce staining
- 2" silver/grey reflective tape
- Convenient left chest pocket
- Color fastness
- Machine washable/Imported
- For printable area specifications, see pgs 6-7.



SIZES: S - 5XL
MSRP: \$22.00



030 - FLUORESCENT YELLOW WITH SILVER/GREY REFLECTIVE TAPE AND BLACK BOTTOM

2255

DELUXE

THE FOREMAN POLO

The safety you need with a super comfortable fit

- Meets ANSI/ISEA 107-2020 Class 2 color standards
- 100% birdseye polyester polo with tapered collar
- Wicks moisture away from the body
- Spun polyester micro fiber feels like soft cotton
- Soil release properties reduce staining
- 2" 3M silver/grey reflective tape
- Color fastness
- Machine washable/Imported
- For printable area specifications, see pgs 6-7.



030 - FLUORESCENT YELLOW WITH SILVER/GREY REFLECTIVE TAPE

SIZES: S - 5XL
MSRP: \$28.00





030 - FLUORESCENT YELLOW MEETS ANSI/ISEA COLOR STANDARDS

2275 DELUXE

THE HI-VIS POLO

Stay dry all day with our moisture wicking polo

- 100% birdseye polyester polo with tapered collar
- Wicks moisture away from the body
- Soil release properties reduce staining
- Machine washable/Imported



SIZES: S - 5XL
MSRP: \$20.00



030 - FLUORESCENT YELLOW WITH SILVER/GREY REFLECTIVE TAPE

2350 DELUXE

THE PATROLMAN

Performance polo with a stylish black tapered collar

- Meets ANSI/ISEA 107-2020 Class 2 color standards
- 100% birdseye polyester polo with black tapered collar
- Wicks moisture away from the body
- Mic clips on right and left chest
- Soil release properties reduce staining
- 2" 3M silver/grey reflective tape
- Color fastness
- Machine washable/Imported
- For printable area specifications, see pgs 6-7.



SIZES: S - 5XL
MSRP: \$26.00

I-65 **ECONO**

THE ECONO-SAFETY MESH VEST

Econo vests – affordable quality and durability

- Meets ANSI/ISEA 107-2020 Class 2 color standards
- 100% lightweight polyester mesh
- 2" silver reflective tape
- 1 inside left chest pocket with Velcro® closure
- Front Velcro® closure
- Machine washable/Imported
- For printable area specifications, see pgs 6-7.

CLASS
2

SIZES: S - 5XL
MSRP: \$9.50



030 - FLUORESCENT YELLOW
WITH 2" SILVER/GREY REFLECTIVE TAPE



BACK VIEW



I-70

ECONO

THE ECONO-SAFETY POLYESTER VEST

Econo vests – affordable quality and durability

- Meets ANSI/ISEA 107-2020 Class 2 color standards
- 100% polyester tricot
- 2" silver reflective tape
- 1 inside left chest pocket with Velcro® closure
- Front Velcro® closure
- Machine washable/Imported
- For printable area specifications, see pgs 6-7.

CLASS 2

SIZES: S - 5XL
MSRP: \$9.50



030 - FLUORESCENT YELLOW
WITH 2" SILVER/GREY REFLECTIVE TAPE

I-35E

ECONO

THE ECONO WORK ZONE VEST

Choose your colors — Easily identify job functions or match to your corporate brand

- Non-ANSI standard vest with reflective stripes
- 100% lightweight polyester woven tricot fabric
- Velcro® closure for easy access
- Two inside chest pockets
- 2" silver/grey reflective tape
- Machine washable/Imported
- For printable area specifications, see pgs 6-7.

SIZES: S-M, L-XL, 2XL-3XL, 4XL-5XL, 5XL-6XL, 6XL-7XL (6XL-7XL IN FLUORESCENT YELLOW & FLUORESCENT ORANGE ONLY)

MSRP: \$9.50



030 - FLUORESCENT YELLOW



031 - FLUORESCENT ORANGE



100 - BLACK



200 - DK. GREEN **NEW!**



400 - NAVY



550 - PINK **NEW!**



600 - RED



700 - ROYAL



TOP MARKETS FOR WORK ZONE VESTS

Warehouse & Maintenance Workers • Industrial Facility Visitors
• Special Event Volunteers • Road Clean-Up Crews • Stadium Security & Food Service • Landscapers/Tree Removal • Parking Lot Attendants/Valets • Shopping Cart Retrievers • School Crossing Guards • Protestors/Demonstrators

I-44

DELUXE

THE SURVEYOR VEST

Geared up with features to meet the most demanding jobs

- Meets ANSI/ISEA 107-2020 Class 2 color standards
- 100% fade resistant lightweight mesh polyester woven fabric with contrasting black trim
- 2" silver/grey reflective tape with 1" black stripes on both sides
- Left chest pocket with 4-division pen pocket
- Right chest cell phone pocket with PVC
- Two lower front outside pockets with flap/ Left inside chest pocket
- Two large lower inside pockets, one with Velcro® closure
- 23" lower back pocket with zipper on both sides/ Reinforced edges
- Fully dielectric, non-conductive zipper closure
- Machine washable/Imported
- For printable area specifications, see pgs 6-7.

CLASS 2

SIZES: S - 5XL

MSRP: \$25.00



030 - FLUORESCENT YELLOW WITH SILVER/GREY REFLECTIVE TAPE BORDERED WITH 1" BLACK STRIPES



I-84 DELUXE

THE D.O.T. 100% POLYESTER WOVEN FABRIC VEST

D.O.T. vests put safety and durability first

- Meets ANSI/ISEA 107-2020 Class 2 color standards
- 2" 3M silver/grey reflective tape with 1" contrast color stripes on sides of reflective tape
- Fade resistant lightweight polyester woven fabric with contrasting hi-vis trim
- Fully dielectric, non-conductive zipper closure
- Interior pockets on left and right
- Machine washable/Imported
- For printable area specifications, see pgs 6-7.

CLASS 2

SIZES: S - 5XL
MSRP: \$22.50



030 - FLUORESCENT YELLOW WITH SILVER/GREY REFLECTIVE TAPE BORDERED WITH 1" FLUORESCENT ORANGE STRIPES



031 - FLUORESCENT ORANGE WITH SILVER/GREY REFLECTIVE TAPE BORDERED WITH 1" FLUORESCENT YELLOW STRIPES



I-85

DELUXE

THE MESH D.O.T. VEST WITH POCKETS

The D.O.T. vest in a lightweight polyester mesh

- Meets ANSI/ISEA 107-2020 Class 2 color standards
- 2" 3M silver/grey reflective tape with 1" contrast color stripes on sides of reflective tape
- Fade resistant lightweight polyester woven fabric with contrasting hi-vis trim
- Right chest radio pocket/Left chest ID pocket with pen pockets/Interior pockets on left and right
- Machine washable/Imported
- For printable area specifications, see pgs 6-7.

CLASS 2

SIZES: S - 5XL

MSRP: \$22.50



030 - FLUORESCENT YELLOW WITH SILVER/GREY REFLECTIVE TAPE BORDERED WITH 1" FLUORESCENT ORANGE STRIPES



031 - FLUORESCENT ORANGE WITH SILVER/GREY REFLECTIVE TAPE BORDERED WITH 1" FLUORESCENT YELLOW STRIPES



030 - FLUORESCENT YELLOW WITH SILVER/GREY REFLECTIVE TAPE BORDERED BY FLUORESCENT ORANGE STRIPES



030 - FLUORESCENT YELLOW WITH SILVER/GREY REFLECTIVE TAPE BORDERED WITH 1" FLUORESCENT ORANGE STRIPES

I-684 DELUXE

THE 5-POINT BREAKAWAY MESH VEST

Lightweight mesh polyester for all day cool

- Meets ANSI/ISEA 107-2020 Class 2 color standards
- 2" 3M silver/grey reflective tape with 1" contrast color stripes on sides of reflective tape
- 100% lightweight mesh polyester
- Velcro® breakaway closures on shoulders, sides and front
- Fully dielectric, non-conductive, zipper closures with Velcro®
- Right chest radio pocket
- Three pen pocket holder on left chest
- Machine washable/Imported
- For printable area specifications, see pgs 6-7.

CLASS 2

SIZES: S - 5XL
MSRP: \$31.50

I-678E ECONO

THE ECONO CLASS 3 VEST

Lightweight mesh keeps you cool, Class 3 standards keep you protected

- Meets ANSI/ISEA 107-2020 Class 3 color standards
- 100% fade resistant lightweight woven and mesh polyester
- 2" silver/grey reflective tape with 1/2" contrasting orange stripes
- Zipper front closure
- Right chest radio pocket with 4 pen pockets
- Radio mic clips on shoulders
- Two front pockets with flaps
- Machine washable/Imported
- For printable area specifications, see pgs 6-7.

CLASS 3

SIZES: S - 5XL
MSRP: \$18.00

I-495E

ECONO

NEW!

THE 5-POINT CLASS 3 BREAKAWAY ECONO VEST

Class 3 safety in an affordable econo style

- Meets ANSI/ISEA 107-2020 Class 3 color standards
- 2" silver/grey reflective tape with 1" orange contrasting stripes
- 100% fade resistant lightweight polyester mesh
- 5-point Velcro® breakaway closure on shoulders, sleeves, side seams and front closure
- Inner right hand side inside pocket
- Machine washable/Imported
- For printable area specifications, see pgs 6-7.

CLASS 3

SIZES: S - 5XL
MSRP: \$17.00



030 - FLUORESCENT YELLOW WITH SILVER/GREY REFLECTIVE TAPE BORDERED WITH 1" FLUORESCENT ORANGE STRIPES

G-CLIPSE™

1390, PG 42

DIRTY JOBS?

**MEET YOUR
MATCH!**

Providing enhanced visibility
while also hiding grease
& dirt better.



8755, PG 43

▶ G-CLIPSE LINE™

Featuring a range of black apparel options for a clean, and modern look...

No task is too dirty!



▶ ENHANCED VISIBILITY

Bold and stylish with just enough reflective accessories to be noticed safely on any job!



1390

DELUXE

THE G-CLIPSE BOMBER JACKET WITH HIDEAWAY HOOD

Get all the safety and protection of our Style 1370 — the Municipality Jacket in a sleek black look that hides dirt and stains

- 100% breathable polyester Oxford
- Wind and water resistant/Black non-pill fleece lining
- 2" silver/grey segmented reflective tape with contrasting lime stripe
- Full zip to top of collar with outside storm flap
- Outer right chest flap pocket, front pockets with closure cover, side access zippers, inside zipper pockets, radio mic clips on shoulders
- Machine washable/Imported
- For printable area specifications, see pgs 6-7.

SIZES: S - 5XL

MSRP: \$118.00



100 - BLACK WITH SILVER/GREY SEGMENTED REFLECTIVE TAPE ON CONTRASTING LIME STRIPE

CONVENIENT
SIDE ACCESS
ZIPPER



8755

DELUXE

G-CLIPSE SURVIVOR WORK SHIRT WITH CONTRASTING & SEGMENTED TAPE

Segmented reflective tape for superior mobility
in two versatile color options

- ANSI/ISEA 107-2020 Class 2 color standards (Fluorescent Yellow only)
- 9 oz 100% pique anti-pilling fleece
- 2" silver/grey segmented reflective tape on 3" contrasting fluorescent yellow/black stripe
- Front slash pockets
- Deep mic clips on shoulders
- Zip turtleneck with fold over zipper stop
- Machine washable/Imported
- For printable area specifications, see pgs 6-7.

SIZES: S - 5XL
MSRP: \$58.00



100 - BLACK WITH SILVER/GREY SEGMENTED REFLECTIVE TAPE ON CONTRASTING FLUORESCENT YELLOW STRIPE



030 - FLUORESCENT YELLOW WITH SILVER/GREY SEGMENTED REFLECTIVE TAPE ON CONTRASTING BLACK STRIPE



8775

DELUXE

G-CLIPSE REFLECTIVE HOODIE

Our black hoodie with segmented reflective tape keeps you looking stylish and moving comfortably

- 9 oz 100% pique anti-pilling fleece
- 2" silver/grey segmented reflective tape with 3" contrasting lime stripe
- Lined hood, unlined body with generous cut for layering
- Full length zipper and drawstring on hood
- Wicks moisture away from the body
- Color fastness
- Machine washable/Imported
- For printable area specifications, see pgs 6-7.

SIZES: S - 5XL

MSRP: \$68.00



100 - BLACK WITH SILVER/GREY SEGMENTED REFLECTIVE TAPE ON CONTRASTING FLUORESCENT YELLOW STRIPE



9250E

ECONO

NEW!

THE LEADER ENHANCED VISIBILITY BOMBER JACKET

Our new versatile bomber jacket is a stand out for safety and warmth

- Heavyweight Taslan outer nylon shell
- PU coated and seam sealed for wind and waterproofing
- Non-pilling polyester fleece lining
- 1" silver/grey reflective tape thru chest and sleeves
- Full zip to top of collar with inside storm flap
- Zipper pockets with cover closure
- Inside zipper pockets
- Hemmed open bottom with drawstring for adjustable fit
- Machine washable/Imported
- For printable area specifications, see pgs 6-7.

SIZES: S - 5XL

MSRP: \$65.00



100 - BLACK WITH SILVER REFLECTIVE TAPE



400 - NAVY WITH SILVER REFLECTIVE TAPE



400 - DK. NAVY/HEATHER WITH SILVER REFLECTIVE TAPE



600 - RED WITH SILVER TAPE

9450

DELUXE

THE COMMANDER BOMBER JACKET

Superior performance for the toughest tasks

- Heavyweight Taslan outer shell
- Coated for wind and water resistance
- Non-pill polyester fleece lining
- Silver reflective piping along raglan shoulder seam
- 3M silver/grey reflective tape
- Full zip to top of collar with inside storm flap
- Zipper pockets with cover closure
- Inside zipper pockets
- Side zipper to accommodate accessories
- Machine washable/Imported

SIZES: S - 5XL

MSRP: \$85.50



400 - DK. NAVY/HEATHER WITH SILVER REFLECTIVE TAPE



700 - ROYAL/NAVY WITH SILVER REFLECTIVE TAPE



SIDE ZIP DETAIL

4750

DELUXE

THE EXPRESS JACKET

Stay warm and stylish with a fleece lined collar and quilted lining

- 100% Oxford nylon outer shell
- Coated for wind and water resistance
- 7 oz diamond quilt lining/Raglan sleeves
- Fleece lined collar with hidden hood and drawstrings
- Full zip to top of collar with inside storm flap
- Reflective tape down sleeves and across back
- Outer right chest zipper pocket, front zipper pockets and inside chest pocket
- Open bottom hem/Side seam zippers to accommodate accessories
- Velcro® cuff closures
- Left sleeve accessory pocket

HIDDEN HOOD WITH DRAWSTRING



SIDE VIEW

SIZES: S - 5XL

MSRP: \$83.00



100 - BLACK WITH SILVER TAPE



400 - NAVY WITH SILVER TAPE



600 - RED WITH SILVER TAPE

THE NATION'S #1 SUPPLIER OF WORK SHIRTS

FOR OVER 45 YEARS!



8025-T
NEW
NOW IN
XS IN
NAVY!

870-T • 811 • 8025-T • 8075 • 8080-T • 8020-D • 8270 • 870-T • 810 • 8755

10 IN-STOCK STYLES, MADE IN THE USA OPTIONS,
AND AN ARRAY OF CUSTOMIZABLE FEATURES

For complete information, see pgs 93-96.

NEW FEATURES FOR 2022



Deeper mic clips
with Canvas Twill or
Denim Accent



Canvas Twill or
Denim placket
with zipper stop



Redesigned elbow
patches for a
modern look



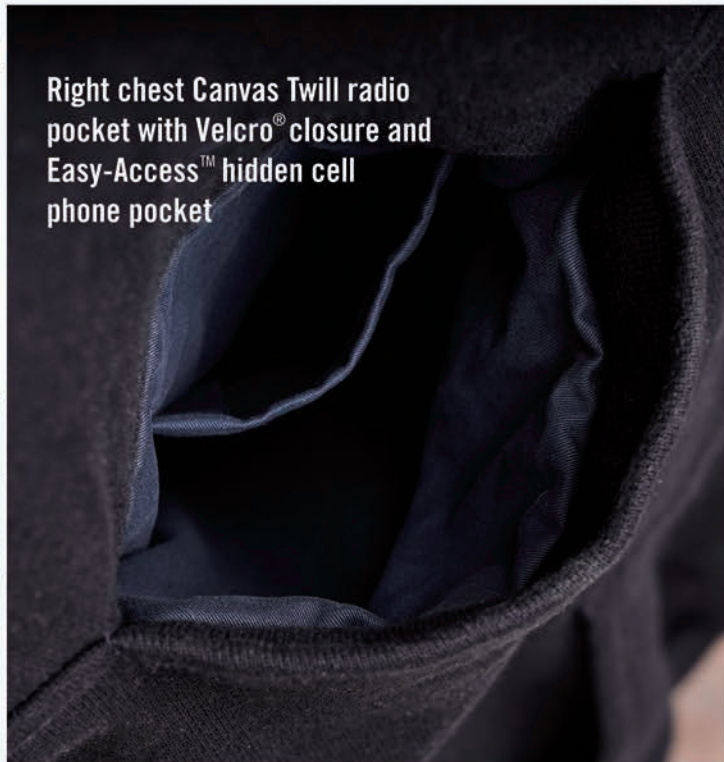
Recessed two pen pocket
holder for sleeker look
and added comfort with
Canvas Twill or
Denim Accent



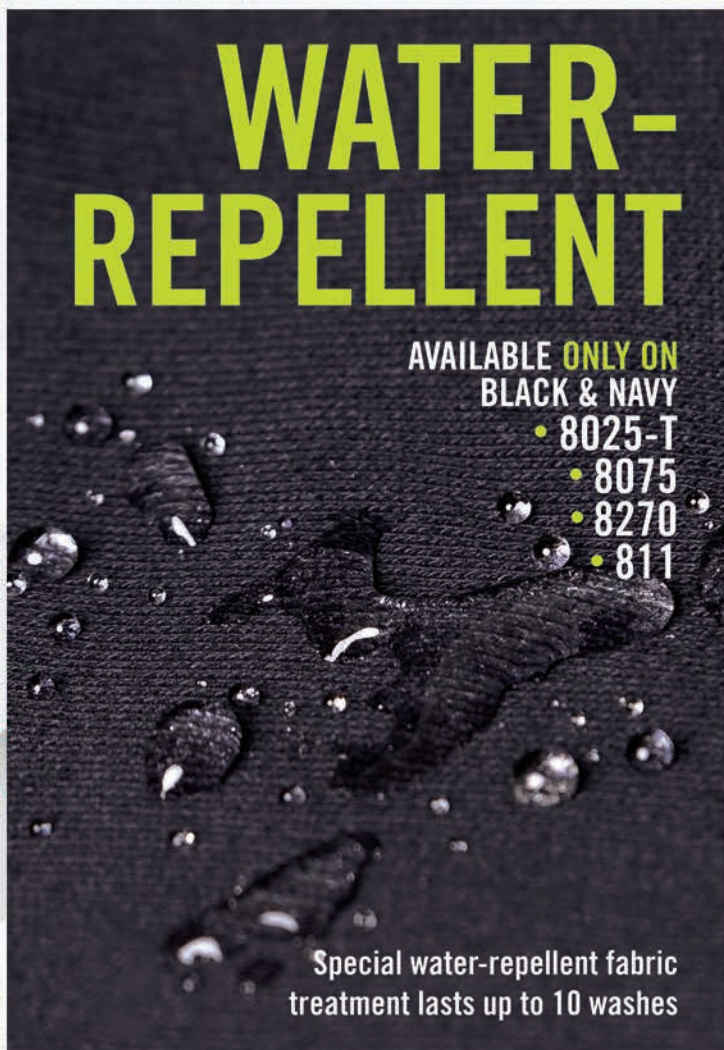
Canvas Twill
or Denim
placket with
fold over
zipper stop



Cotton Canvas
Twill tape at
collar seam
adds structure
and comfort



Right chest Canvas Twill radio
pocket with Velcro® closure and
Easy-Access™ hidden cell
phone pocket



WATER- REPELLENT

AVAILABLE ONLY ON
BLACK & NAVY

- 8025-T
- 8075
- 8270
- 811

Special water-repellent fabric
treatment lasts up to 10 washes

8525

NEW!

THE HOODED WORK SHIRT

Easy pullover styling keeps you comfortable for work and play

- 15 oz 80/20 cotton/polyester super weight fleece
- Get a Sure-Fit™ with a generous cut, allowing for shrinkage after washing
- Modern design with triple stitch finish
- Color matched molded zipper
- Set-in sleeves
- Knit cuffs and bottom band

Enhanced Features

- Canvas Twill placket with fold over zipper stop
 - Kangaroo pouch pocket with hidden Twill cell phone pocket
 - Water repellent finish up to 10 washes
-
- Machine washable/Imported

SIZES: S - 5XL
MSRP: \$77.00



100 - BLACK



400 - NAVY

810 **USA MADE**

THE FIREFIGHTER'S WORK SHIRT

High-quality construction keeps you ready for the day ahead

- 12 oz 80/20 cotton/polyester super weight fleece
- Set-in sleeves/Knit cuffs and bottom band
- Cotton, No-Curl™ Denim collar
- 7" brass zipper

Enhanced Features

- Right chest Denim radio pocket has a 9" depth with Velcro® closure and Easy-Access™ hidden cell phone pocket
- Redesigned Denim elbow patches for a modern look
- Cotton Canvas Twill tape at collar adds structure and comfort

- Machine washable/Made in USA

SIZES: S - 5XL / TALL: L - 3XL

MSRP: \$80.00



400 - NAVY



CUSTOM ORDER AVAILABLE. Made in USA:

- Any fleece color can be ordered in any Adult, Tall, or Youth sizes.
- Side seam pockets available
- Navy or black Denim available
- Approximate delivery: 3-4 weeks (allow extra time during holiday season)
- For complete information, see pgs 94-96.





870-T USA MADE

THE FIREFIGHTER'S ZIP TURTLENECK

Super weight fleece provides all day comfort

- 12 oz 80/20 cotton/polyester super weight fleece
- Set-in sleeves/Knit cuffs and bottom band
- Brass zip turtleneck
- No Denim/Canvas Twill elbow patches

Enhanced Features

- Placket with Canvas Twill zipper stop
 - Right chest Canvas Twill radio pocket has a 9" depth with Velcro® closure and Easy-Access™ hidden cell phone pocket
 - Cotton Canvas Twill tape at collar adds structure and comfort
 - Side seam pockets
-
- Machine washable/Made in USA



SIZES: S - 5XL / TALL: L - 3XL
MSRP: \$80.00



400 - NAVY



CUSTOM ORDER AVAILABLE. Made in USA:

- Any fleece color can be ordered in any Adult or Tall sizes.
- Approximate delivery: 3-4 weeks (allow extra time during holiday season)
- For complete information, see pgs 94-96.

8025-T

IMPORTED

THE RESPONDER

Superior comfort and functionality built in

- 12 oz 80/20 cotton/polyester super weight fleece
- Get a Sure-Fit™ with a generous cut, allowing for shrinkage after washing
- Brass zip turtleneck with hang loop
- Set-in sleeves/Knit cuffs and bottom band

Enhanced Features

- **Special water-repellent fabric treatment, lasts up to 10 washes black and navy only**
 - **Canvas Twill placket with fold over zipper stop**
 - **Deep mic clips on shoulders with matching Canvas Twill accent**
 - **Right chest Canvas Twill radio pocket has a 9" depth with Velcro® closure and Easy-Access™ hidden cell phone pocket**
 - **Recessed two pen pocket holder on left sleeve for sleeker look with Canvas Twill accent**
 - **Redesigned Canvas Twill elbow patches for a modern look**
 - **Cotton Canvas Twill tape at collar adds structure and comfort**
 - **Side seam pockets**
-
- Machine washable/Imported

BIG+
TALL

SIZES: S - 5XL, XS NAVY ONLY / TALL: L - 3XL NAVY ONLY

MSRP: \$61.00



100 - BLACK



400 - NAVY



850 - GREY

IMPORTED

811

THE FIREFIGHTER'S WORK SHIRT WITHOUT DENIM

A lay down collar work shirt ready for the toughest jobs



- 12 oz 80/20 cotton/polyester super weight fleece
- Get a Sure-Fit™ with a generous cut, allowing for shrinkage after washing
- Self material lay down collar with hang loop
- Set-in sleeves/Knit cuffs and bottom band
- 7" brass zipper

Enhanced Features

- **Special water-repellent fabric treatment, lasts up to 10 washes black and navy only**
 - **Deep mic clips on shoulders with matching Canvas Twill accent**
 - **Right chest Canvas Twill radio pocket has a 9" depth with Velcro® closure and Easy-Access™ hidden cell phone pocket**
 - **Recessed two pen pocket holder on left sleeve for sleeker look with Canvas Twill accent**
 - **Cotton Canvas Twill tape at collar adds structure and comfort**
 - **Side seam pockets**
-
- Machine washable/Imported



SIZES: S - 5XL, XS NAVY ONLY / TALL: L - 3XL

MSRP: \$64.00



100 - BLACK

400 - NAVY

850 - GREY

CUSTOM CUSTOM ORDER AVAILABLE. Made in USA:



- Any fleece color can be ordered in any Adult, Tall, or Youth sizes.
- Order with or without side seam pockets
- Navy or black Denim available
- Self material lay down available
- Approximate delivery: 3-4 weeks (allow extra time during holiday season)
- For complete information, see pgs 94-96.

8020-D

IMPORTED

THE DEFENDER

Built in performance and features for on the job and off

- 12 oz 80/20 cotton/polyester super weight fleece
- Get a Sure-Fit™ with a generous cut, allowing for shrinkage after washing
- Set-in sleeves/Knit cuffs and bottom band
- 7" brass zipper
- No-Curl™ Denim collar with hang loop

Enhanced Features

- Deep mic clips on shoulders with matching Denim accent
 - Right chest Denim radio pocket has a 9" depth with Velcro® closure and Easy-Access™ hidden cell phone pocket
 - Recessed two pen pocket holder on left sleeve for sleeker look with Denim accent
 - Redesigned Denim elbow patches for a modern look
 - Cotton Canvas Twill tape at collar adds structure and comfort
 - Side seam pockets
-
- Machine washable/Imported

BIG+
TALL

SIZES: S - 5XL / TALL: L - 3XL NAVY ONLY

MSRP: \$63.00



DEEP MIC CLIPS
WITH DENIM ACCENT

RECESSED TWO PEN
POCKET WITH DENIM ACCENT

REDESIGNED DENIM
ELBOW PATCHES



100 - BLACK/
NAVY DENIM



200 - DK. GREEN/
NAVY DENIM



400 - NAVY/NAVY
DENIM



600 - RED/NAVY
DENIM



850 - GREY/NAVY
DENIM

IMPORTED

8270

THE PATRIOT OPEN BOTTOM WORK SHIRT

An open bottom provides maximum flexibility and comfort

- 12 oz 80/20 cotton/polyester super weight fleece
- Get a Sure-Fit™ with a generous cut, allowing for shrinkage after washing
- Brass zipper turtleneck
- Set-in sleeves/Knit cuffs/Open bottom

Enhanced Features

- Special water-repellent fabric treatment, lasts up to 10 washes black and navy only
 - Canvas Twill placket with fold over zipper stop
 - Deep mic clips on shoulders with matching Canvas Twill accent
 - Right chest Canvas Twill radio pocket has a 9" depth with Velcro® closure and Easy-Access™ hidden cell phone pocket
 - Recessed two pen pocket holder on left sleeve for sleeker look with Canvas Twill accent
 - Cotton Canvas Twill tape at collar adds structure and comfort
 - Side seam pockets
-
- Machine washable/Imported
 - **Custom Order Available.** Made in USA. See pgs 94-96 for colors and options.



SIZES: S - 5XL, XS NAVY ONLY / TALL: L - 3XL NAVY ONLY

MSRP: \$78.00



100 - BLACK



400 - NAVY





8080-T

8075



400 - NAVY



400 - NAVY

IMPORTED 8080-T

THE FIREFIGHTER'S FULL ZIP TURTLENECK

All the features you need in a modern full zipper turtleneck

- 12 oz 80/20 cotton/polyester super weight fleece
- Self material NO CURL™ zip-up turtleneck with Velcro®
- Set-in sleeves/knit cuffs and bottom band
- Heavy duty full zipper closure

Enhanced Features

- Deep mic clips on shoulders with matching Canvas Twill accent
- Right chest Canvas Twill radio pocket has a 9" depth with Velcro® closure and Easy-Access™ hidden cell phone pocket
- Recessed two pen pocket holder on left sleeve for sleeker look with Canvas Twill accent
- Redesigned Canvas Twill elbow patches for a modern look
- Cotton Canvas Twill tape at collar adds structure and comfort
- Side seam pockets

• Machine washable/Imported

• **Custom Order Available.** Made in USA. See pgs 94-96 for colors and options.



SIZES: S - 5XL
MSRP: \$78.00

IMPORTED 8075

THE FIREFIGHTER'S FULL ZIP WORK SHIRT WITH LAY DOWN COLLAR

This full zip work shirt doubles as a jacket

- 12 oz 80/20 cotton/polyester super weight fleece
- Get a Sure-Fit™ with a generous cut, allowing for shrinkage after washing
- Self material No-Curl™ collar with hang loop
- Set-in sleeves/Knit cuffs and bottom band/Heavy duty full zipper closure

Enhanced Features

- Special water-repellent fabric treatment, lasts up to 10 washes
- Deep mic clips on shoulders with matching Canvas Twill accent
- Right chest Canvas Twill radio pocket has a 9" depth with Velcro® closure and Easy-Access™ hidden cell phone pocket
- Recessed two pen pocket holder on left sleeve for sleeker look with Canvas Twill accent
- Redesigned Canvas Twill elbow patches for a modern look
- Cotton Canvas Twill tape at collar adds structure and comfort

• Machine washable/Imported

• **Custom Order Available.** Made in USA. See pgs 94-96 for colors and options.



SIZES: S - 5XL
MSRP: \$78.00



400 - NAVY



DEEP MIC CLIPS WITH CANVAS TWILL ACCENT



RECESSED TWO PEN POCKET WITH CANVAS TWILL ACCENT

REDESIGNED CANVAS TWILL ELBOW PATCHES



100 - BLACK WITH SILVER/GREY SEGMENTED REFLECTIVE TAPE ON CONTRASTING FLUORESCENT YELLOW STRIPE

ALSO IN FLUORESCENT YELLOW, SEE P23

8070 IMPORTED

THE FIREFIGHTER'S CANVAS COLLAR WORK SHIRT

Stylish Canvas Twill accents and fully loaded with features

- 12 oz 80/20 cotton/polyester super weight fleece
- Cotton, No-Curl™ Canvas Twill collar with hang loop
- Set-in sleeves/Knit cuffs and bottom band
- 7" molded zipper

Enhanced Features

- Deep mic clips on shoulders with matching Canvas Twill accent
- Right chest Canvas Twill radio pocket has a 9" depth with Velcro® closure and Easy-Access™ hidden cell phone pocket
- Recessed two pen pocket holder on left sleeve for sleeker look with Canvas Twill accent
- Redesigned Canvas Twill elbow patches for a modern look
- Cotton Canvas Twill tape at collar adds structure and comfort
- Side seam pockets

• Machine washable/Imported

• **Custom Order Available.** Made in USA. See pgs 94-96 for colors and options.



SIZES: S - 5XL / TALL: L - 3XL

MSRP: \$70.00

8755

ECLIPSE SURVIVOR WORK SHIRT WITH CONTRASTING & SEGMENTED TAPE

Segmented reflective tape for superior mobility in two versatile color options

- ANSI/ISEA 107-2020 Class 2 color standards (Fluorescent Yellow only)
- 9 oz 100% pique anti-pilling fleece
- 2" grey/silver segmented reflective tape on 3" contrasting fluorescent yellow/black stripe
- Front slash pockets
- Deep mic clips on shoulders
- Zip turtleneck with foldover zipper stop
- Machine washable/Imported

SIZES: S - 5XL

MSRP: \$58.00



100 - BLACK WITH SILVER/GREY SEGMENTED REFLECTIVE TAPE ON CONTRASTING FLUORESCENT YELLOW STRIPE



030 - FLUORESCENT YELLOW WITH SILVER/GREY SEGMENTED REFLECTIVE TAPE ON CONTRASTING BLACK STRIPE



PLENTY OF **IN-STOCK** STYLES... BUT WHY STOP THERE?

OFFERING A WIDE
ARRAY OF
CUSTOMIZABLE
OPTIONS ON OUR
ENTIRE LINE OF
**FIREFIGHTER
WORK SHIRTS!**

Options include:

- 6 FLEECE COLORS
- 5 COLLAR STYLES
- 2 POCKET STYLES
- 2 ZIPPER TYPES
- 3 REFLECTIVE TAPE COLORS
- ELBOW PATCH COLORS & STYLES
- TALLS (XS - 5XL)
- SHORT (XS - 5XL)
- YOUTH (YSM - YLG)

**ALL PROUDLY
MADE IN THE USA**



For complete information, see pgs 93-96.



MIC CLIPS

BRASS ZIPPER
WITH MATCHING TAPE

DKGREEN
12 oz 80/20
SUPER WEIGHT
FLEECE

RECESSED TWO PEN
POCKET HOLDER

POUCH POCKETS

HEMMED BOTTOM
(8270)

4970

THE COLORADO COAT

Comfortable and stylish, this waterproof jacket features silver stitching and reflective enhancements for a functional and refined look

- 100% polyester oxford with quilted lining
- Breathable wind and waterproof with sealed seams
- Spacious right chest pocket with hideaway ID holder
- Side seam pockets
- Adjustable cuffs with Velcro® closure
- Adjustable hemmed tail
- Storm flap over full zip closure
- Detachable bungee quilted hood
- Back In-Zip embroidery access zipper
- Machine washable/Imported



SIZES: S - 5XL

MSRP: \$116.00

HIDEAWAY
ID HOLDER



100 - BLACK

DETACHABLE
HOOD



400 - NAVY



1250

THE ICON QUILTED CHORE COAT

Ready to take on the tough jobs

- Wind resistant nylon Taffeta shell
- 5 oz poly-fill lining with thermal knit backing
- 100% polyester rib knit collar, cuff and bottom band (back only) and shoulder gussets
- Full front zipper and two outer pockets
- Inset sleeves with gussets for comfortability
- Tailored bottom hem/Imported

SIZES: S - 5XL
MSRP: \$60.00

GUSSETS FOR
COMFORTABILITY

DEEP
POCKETS

TAILORED
EXTENDED
BOTTOM
HEM



100 - BLACK



400 - NAVY

1220-J

USA MADE

THE BRAVEST

Our classic diamond quilt jacket — now in a Made in USA version

- Wind-resistant nylon Taffeta shell
- 5 oz poly-fill lining with thermal knit backing
- 100% polyester rib knit collar cuff and bottom band (back only)
- Full front zipper
- Two outer pockets
- Machine washable
- Made in USA

BIG+
TALL

MADE IN
USA

SIZES: S - 5XL / TALL: L - 3XL

MSRP: \$96.00



100 - BLACK



400 - NAVY



PROUDLY MADE
IN THE USA

1221-J

THE BRAVEST

Versatile and warm — for on the job and off

- Wind-resistant nylon Taffeta shell
- 5 oz poly-fill lining with thermal knit backing
- 100% polyester rib knit collar cuff and bottom band (back only)
- Full front zipper
- Two outer pockets
- Machine washable/Imported

BIG+
TALL

SIZES: S - 5XL / TALL: L - 3XL
MSRP: \$57.00



100 - BLACK



400 - NAVY



1222-V

THE FINEST

Keep your core warm with our comfortable layering vest

- Wind-resistant nylon Taffeta shell
- 5 oz poly-fill lining with thermal knit backing
- 100% polyester rib knit collar
- Full front zipper
- Two outer pockets
- Machine washable/Imported

SIZES: S - 5XL

MSRP: \$46.00



100 - BLACK



400 - NAVY



7750

THE EVOKE SOFT SHELL JACKET

Stylish and water-resistant, our new jacket is built for on the job and off

- 100% polyester woven shell, wind and water-resistant
- 100% polyester microfleece lining
- Full-length interior storm flap
- Front zip-through collar with chin guard
- Zippered chest pocket
- Front zipper pockets
- Open cuffs
- Open bottom hem with adjustable bungee drawstring

SIZES: S - 3XL

MSRP: \$52.00



100 - BLACK



400 - NAVY



9400



100 - BLACK/HEATHER

THE THREE SEASONS JACKET

Weather resistant with comfort built in

- Heavyweight Taslan nylon shell, wind/water resistant
- Non-pill 16 oz polyester fleece lining
- Raglan sleeves
- 100% stretch nylon knit cuffs and bottom band
- Full zip front with inner storm flap
- Outside zipper pockets
- Inside zippered right chest pocket
- Machine washable/Imported



SIZES: S - 5XL / TALL: L - 3XL
MSRP: \$59.50



100 - BLACK/HEATHER



200 - DK. GREEN/HEATHER



300 - MAROON/HEATHER



400 - NAVY/HEATHER



600 - RED/NAVY



700 - ROYAL/NAVY

5000

THE VARSITY JACKET

Our legendary varsity jacket Awards | Branding | Uniforms

- Melton wool body, quilted lining (nylon available as a custom order)
- Set-in genuine leather sleeves with coordinating pockets
- Non-pill, high-memory, wool knit collar, cuffs and waistband
- Inside wallet pocket/Snap front
- Professional leather dry cleaning required
- **Custom Order Available, see pgs 90-97 for colors and options.**



**SIZES: XS - 5XL ALL COLORS /
TALL: L - 5XL IN BLACK/BLACK ONLY
MSRP: \$242.00**

- Highest quality and finest construction on the market
- Proudly Made in the USA
- Wide selection of in-stock color combinations, see pg 75
- Endless customization options
- Add your logo with full-service embellishment



9600

THE VERMONT PARKA

The ultimate in cold weather protection

- GAME-Tex™ heavyweight durable nylon outer shell
- Wind/water resistant
- 8 oz high-performance quilted poly-fill lining
- Bungee cord at waist, hem and collar
- Inside wallet pocket
- Hidden hood in collar
- Machine washable/Imported



SIZES: S - 5XL (4XL & 5XL BLACK & NAVY ONLY)

MSRP: \$100.00



100
BLACK/BLACK



201
DK. GREEN/BLACK



400
NAVY/NAVY



601
RED/BLACK



701
ROYAL/BLACK

3100

THE YUKON 3-IN-1 PARKA

Always be covered with three jacket options

Outer Jacket

- GAME-Tex™ heavyweight durable Taslan outer shell, wind/water resistant with quilted poly-fill lining
- Oxford nylon shoulder inserts
- Bungee cord at waist, hem and collar
- Inside wallet pocket/Hip length
- Hidden hood in collar
- Machine washable/Imported

Inner Jacket

- Lightweight Taslan nylon shell, wind/water resistant with non-pill polyester fleece lining
- Stretch nylon knit cuffs and bottom band
- Full zip front/Waist length/Raglan sleeves
- Outside and inside zipper pockets
- Machine washable/Imported



SIZES: S - 5XL (4XL & 5XL BLACK & NAVY ONLY)

MSRP: \$141.00



100 BLACK/BLACK W/ BLACK/CHARCOAL ZIP OUT JACKET



400 NAVY/NAVY W/ NAVY/CHARCOAL ZIP OUT JACKET



601 RED/BLACK W/ RED/BLACK ZIP OUT JACKET



701 ROYAL/BLACK W/ ROYAL/BLACK ZIP OUT JACKET

INNER
JACKET





2022 SPORTSWEAR

www.GAMESPORTSWEAR.com

WE DO IT ALL!

FULL-SERVICE DESIGN AND EMBELLISHMENT

CHENILLE **SILKSCREEN**
EMBROIDERY
TACKLE TWILL



WHY SHOP ANYWHERE ELSE? WE'RE YOUR ONE-STOP



Personalize your apparel with the help of our full-service, in-house decoration department:

- > Extensive Embroidery and Twill Drop-In designs, plus dozens of Chenille patches to choose from.
- > See our Decoration Brochure at GAMESPORTSWEAR.com for more details!



VARSITY JACKET SHOP. WE COVER ALL YOUR NEEDS!



5000



100 BLACK/BLACK 101 BLACK/ATH. GOLD 107 BLACK/ORANGE 108 BLACK/ORANGE/WHITE



115 BLACK/WHITE 117 BLACK/RED/WHITE 118 RED- BLACK/RED/WHITE 204 DK. GREEN/ATH. GOLD/WHITE



206 DK. GREEN/WHITE 251 KELLY/WHITE 303 MAROON/ATH. GOLD/WHITE 305 MAROON/WHITE



400 DK. NAVY/ DK. NAVY 404 DK. NAVY/ATH. GOLD/WHITE 414 DK. NAVY/WHITE 416 LT. NAVY/WHITE



503 PURPLE/ATH. GOLD/ WHITE 505 PURPLE/WHITE 602 RED/BLACK/WHITE 606 RED/WHITE



708 DK. ROYAL/WHITE 709 LT. ROYAL/WHITE 712 LT. ROYAL/ATH. GOLD/WHITE

THE VARSITY JACKET

Our high-quality, finely constructed varsity jacket is like no other

- Melton wool body, quilted lining (nylon available as a custom order)
- Set-in genuine leather sleeves with coordinating pockets
- Non-pill, high-memory, wool knit collar, cuffs and waistband
- Inside wallet pocket/Snap front
- Professional leather dry cleaning required
- **Custom Order Available, see pgs 90-97 for colors and options.**



SIZES: XS - 5XL ALL COLORS /
TALL: L - 5XL IN BLACK/BLACK ONLY
MSRP: \$242.00



THE BEST IN-ZIP
FEATURE IN THE
MARKET TODAY!

Our full-zip lining creates full access to decorate the front, back and sleeves without sewing through the lining — for a flawless look.

Featured on all in stock wool styles as well as all custom wool styles with set-in sleeves.

(Raglan sleeve styles receive a lower back tail In-Zip)

- Sizing chart on pg 99

5200

THE JV JACKET

The same quality and construction of our popular Varsity Jacket, with vinyl sleeves

- Melton wool body, quilted lining (nylon available as custom order)
- Set-in vinyl sleeves with coordinating pockets
- Non-pill, high-memory, wool blend knit collar, cuffs and waistband
- Inside wallet pocket/Snap front
- Professional dry cleaning required
- **Custom Order Available, see pgs 90-97 for colors and options.**
- Sizing chart on pg 99



SIZES: S - 3XL
MSRP: \$174.00



100
BLACK/BLACK



115
BLACK/WHITE



206
DK. GREEN/WHITE



305
MAROON/WHITE



414
DK. NAVY/WHITE



606
RED/WHITE



709
LT. ROYAL/WHITE



CUSTOM **MADE IN**
VARSITY JACKETS **USA**



THE TOP CHOICE OF A NEW
GENERATION



INTRODUCING
**SCHOOL
& URBAN
FASHION**

**LIMITLESS
OPTIONS**

**CUSTOM
JACKETS
REIMAGINED.**

CUSTOMIZE IT. DON'T JUST BUILD A JACKET...

MAKE A STATEMENT!

- Endless selection of custom styles, sizes, colors, and customizable options
- Unmatched quality and superior construction
- Custom school and urban fashion apparel redefined
- Fastest turnaround in the industry
- Proudly Designed & Made in the USA!

For more information, see pgs 80-87 & 92-93.

Complex/unique jobs, please call in to our customer service representatives for further assistance.



CUSTOMIZE

5000 / 5000Y - VARSITY JACKET

THE AMERICAN MADE
FULLY CUSTOM WOOL/LEATHER

Pictured with Lt Gray Wool Body &
Ocean Blue Leather Sleeves



PICTURED WITH
7" CHENILLE
LETTER



5500 / 5500Y - THE PRO JACKET

WOOL/LEATHER JACKET WITH RAGLAN SLEEVES

Pictured with Dk Royal Wool Body & Orange Leather Sleeves



5050 - THE STADIUM SURCOAT

WOOL/LEATHER SURCOAT LENGTH VARSITY JACKET WITH HEMMED BOTTOM

Average length is 36".



5700 - THE MVP JACKET

WOOL/LEATHER JACKET WITH SHOULDER INSERTS



- Melton wool body
- Non-pill, high-memory knit collar, cuffs and waistband
- Inside wallet pocket/Snap front
- Professional dry cleaning required
- Any combination of leather and wool colors with your choice of knit trim, lining and collar can be ordered in any Adult, Tall or Youth size
- **For Complete Custom Order Information, see pgs 90-97 for colors and options.**
- Approximate delivery: 3-4 weeks (allow extra time during holiday season)



ADULT: XS - 6XL / TALL: L - 6XL /
 YOUTH: YXS - YL (YXXS AVAILABLE IN
 STYLE 5000Y ONLY)

PICTURED WITH
5" CUSTOM SCRIPT
CHENILLE YEAR

PICTURED WITH
CUSTOM 7"
CHENILLE LETTER



500W - THE LADIES' FIT VARSITY JACKET

LADIES' FIT WOOL/LEATHER VARSITY JACKET

520W - THE LADIES' FIT JV JACKET

LADIES' FIT WOOL/VINYL AWARD JACKET

*Tapered for a perfect fit

Ask for Reverse Snaps for a men's slim cut varsity jacket.

510W - THE LADIES' FIT ENVOY JACKET

LADIES' FIT WOOL/WOOL JACKET

Pictured with Teal Wool Body & Kelly Wool Sleeves



- Melton wool body with non-pill, high-memory knit collar, cuffs and waistband
- Inside wallet pocket
- Reversed snap front for ladies' side closure
- Professional dry cleaning required
- Any combination of leather, vinyl and wool colors with your choice of knit trim, lining and collar can be ordered in any Ladies' and Ladies' Tall size
- **For Complete Custom Order Information, see pgs 90-97 for colors and options.**
- Approximate delivery: 3-4 weeks (allow extra time during holiday season)



LADIES': XS - 3XL / LADIES' TALL: M - 3XL

5510 / 5510Y - THE PRO JACKET

WOOL/VINYL JACKET WITH RAGLAN SLEEVES



5610 / 5610Y - THE TEXAS SPECIAL

WOOL/VINYL JACKET WITH RAGLAN SLEEVES

Byron Laydown Collar & Taffeta Lining



PICTURED WITH A
CUSTOM STAGGERED
7" CHENILLE LETTER
WITH EMBROIDERY

5200 / 5200Y - THE JV JACKET

WOOL/VINYL JACKET WITH SET-IN SLEEVES

Pictured with Lt Royal Wool Body & White Vinyl Sleeves



PICTURED WITH
7" CHENILLE LETTER

- Melton wool body
- Non-pill, high-memory knit collar, cuffs and waistband
- Inside wallet pocket/Snap front
- Professional dry cleaning required
- Any combination of vinyl and wool colors, with your choice of knit trim, lining and collar type can be ordered in any size
- **For Complete Custom Order Information, see pgs 90-97 for colors and options.**



ADULT: XS - 6XL / TALL: L - 6XL /
YOUTH: YXS - YL

5100 / 5100Y - THE ENVOY JACKET



PICTURED WITH
7" CHENILLE LETTER

5180 / 5180Y - THE ALL-WOOL AWARD JACKET



PICTURED WITH
CUSTOM CHENILLE
COLLEGE LETTERING

5150 - THE STADIUM SURCOAT

WOOL/WOOL SURCOAT LENGTH VARSITY
JACKET WITH HEMMED BOTTOM

Average length is 36".



- Melton wool body and sleeves
- Non-pill, high-memory wool blend knit, cuffs and waistband
- Knit collar (5100)
- All-wool lay down collar (5180)
- Also available with raglan sleeve construction at additional charge (5100/5100Y, 5180/5180Y)
- Inside wallet pocket/Snap front/Professional dry cleaning required
- Any wool color combination, your choice of lining, collar type, wool or leather pocket trim and knit trim can be ordered in Adult, Tall or Youth
- **For Complete Custom Order Information, see pgs 90-97 for colors and options.**
- Approximate delivery: 3-4 weeks (allow extra time during holiday season)



ADULT: XS - 6XL / TALL: L - 6XL / YOUTH: YXS - YL

501 / 501L - THE WINNER WOOL JACKET

ONE-COLOR LEATHER SHOULDER INSERTS



502 / 502L - THE CHAMP WOOL JACKET

TWO-COLOR LEATHER SHOULDER INSERTS



503 / 503L - THE FAVORITE WOOL JACKET

ONE-COLOR LEATHER SHOULDER INSERT AND ONE-COLOR LEATHER OVERLAY

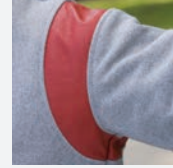


SHOULDER INSERTS

501



ONE-COLOR LEATHER SHOULDER INSERTS (PARTIAL) 501

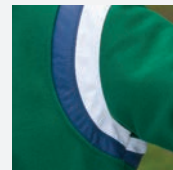


ONE-COLOR LEATHER SHOULDER INSERTS (FULL) 501

502

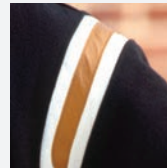


TWO-COLOR LEATHER SHOULDER INSERTS (PARTIAL) 502



TWO-COLOR LEATHER SHOULDER INSERTS (FULL) 502

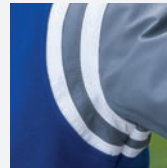
503



ONE-COLOR INSERTS W/ ONE-COLOR OVERLAY (PARTIAL) 503



THREE-COLOR LEATHER SHOULDER INSERTS (PARTIAL) 503



ONE-COLOR INSERTS W/ ONE-COLOR OVERLAY (PARTIAL) 503



THREE-COLOR LEATHER SHOULDER INSERTS (FULL) 503

- Melton wool body and sleeves (styles 501, 502, 503)
- Melton wool body and leather sleeves (styles 501L, 502L, 503L)
- Non-pill, high-memory wool blend knit, cuffs and waistband
- Inside wallet pocket/Snap front/Professional dry cleaning required
- Any wool color combination, your choice of lining, collar type, wool or leather pocket trim and knit trim can be ordered in Adult, Tall or Youth
- **For Complete Custom Order Information, see pgs 90-97 for colors and options.**
- Approximate delivery: 3-4 weeks (allow extra time during holiday season)



ADULT: XS - 6XL / TALL: L - 6XL / YOUTH: YS - YL

5110 - THE PRECISION AWARD JACKET

FULL RAGLAN SLEEVE INSERT



PICTURED WITH
OPTIONAL CORDING
ON POCKETS AND
SLEEVES

5800 - THE WOOL JACKET

WITH V-LEATHER INSERT JACKET



PICTURED WITH
OPTIONAL CORDING

5000 - THE VARSITY JACKET

WITH FULL LENGTH ZIPPER & WIND FLAP



555 - AWARD BLANKET



- Melton wool body
- Non-pill, high-memory knit collar, cuffs and waistband
- Inside wallet pocket/Snap front/Professional dry cleaning required
- Any combination of leather and wool colors with your choice of knit trim, lining and collar can be ordered in any Adult, Tall or Youth size
- **For Complete Custom Order Information, see pgs 90-97 for colors and options.**
- Approximate delivery: 3-4 weeks (allow extra time during holiday season)



ADULT: XS - 6XL / TALL: L - 6XL / YOUTH: YXS - YL
(YXXS AVAILABLE IN STYLE 5000Y ONLY)

6000 - THE WOOL LEATHER JACKET

WITH BODY INSERT JACKET

Featuring a vertical 2 welt pocket construction
 Pictured with
 Red wool body
 Red leather sleeves
 White leather body inserts



6100 - THE ALL-WOOL JACKET

WITH SPECIAL INSERT

Featuring a vertical 2 welt pocket construction
 Pictured with
 Red wool body & sleeves
 Black wool body inserts

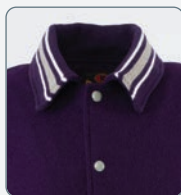


CUSTOM WOOL COLLARS AND HOODS

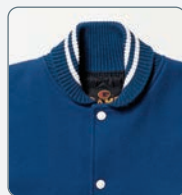
Available on custom order wool, leather and vinyl jackets in Adult, Tall and Youth sizes.



A. STAND-UP
KNIT COLLAR



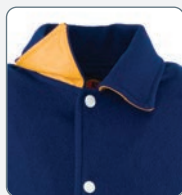
B. KNIT/WOOL
BYRON COLLAR



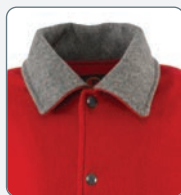
C. WHITING
KNIT COLLAR



D. ALL LEATHER
BYRON COLLAR



E. LEATHER/WOOL OR
WOOL/LEATHER BYRON COLLAR



K. ALL WOOL
BYRON COLLAR



F. WOOL JACKET WITH ZIPPER
AND WIND FLAP **NEW!**



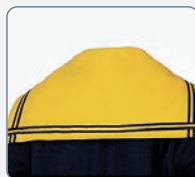
G. WOOL
ZIPPER HOOD



H. WOOL SAILOR
COLLAR



I. MITERED BRAIDING
ON SAILOR COLLAR



J. CROSS-OVER BRAIDING
ON SAILOR COLLAR



P. WOOL SAILOR COLLAR
WITH ZIPPER



Q. SHALLOW SCALLOPED
ZIPPERED HOOD



R. THREE-PANEL
CLOSED HOOD

MAKE A STATEMENT



MA-1C

THE AMERICAN MADE MA-1 BOMBER JACKET

- Heavyweight Pro-Satin, Oxford or laundered Taslan exterior shell
- 4.5 oz quilt, tricot Kasha, or lightweight Taffeta lining
- Set-in sleeves/Stretch nylon knit collar, cuffs and waistband
- Full-inner front patterned protective placket
- Double needle finish for durability and finish
- Full-front molded plastic or heavyweight metal zipper
- Two exterior reinforced flap pockets with snap closure
- MA-1 utility pocket on sleeve
- Machine washable
- **For complete custom order information, see pgs 90-97.**
- Approximate delivery: 3-4 weeks (allow extra time during holiday season).



SIZES: XS - 5XL / TALL: L - 5XL

CUSTOM AWARD JACKETS

BUILD YOUR JACKET, YOUR WAY!



PSQA / PSQY
QUILT LINED

PSQAS / PSQYS
QUILT LINED

OQA / OQY
QUILT LINED

PSQA-Z PSKA-Z
QUILT LINED KASHA LINED

PSQA-I
QUILT LINED WITH SHOULDER
INSERTS

PSKA / PSKY
KASHA LINED

PSKAS / PSKYS
KASHA LINED

OKA / OKY
KASHA LINED

Oxford fabric also available:
OQA-Z OKA-Z
QUILT LINED KASHA LINED

**THE GAME
PRO-SATIN
AWARD JACKET**

**THE BIG LEAGUE
PRO-SATIN AWARD
JACKET WITH
SPECIAL TRIM**

**THE OXFORD
NYLON AWARD
JACKET**

**THE PRO-SATIN OR
OXFORD FULL ZIP
AWARD JACKET**

**THE PRO-SATIN
JACKET**

Full-front plastic zipper
available in Navy or
Black only. Youth not
available.

- Heavyweight Pro-Satin/Oxford nylon/Taslan
- Set-in sleeves or Raglan sleeves
- Stretch nylon knit collar cuffs and waistband
- Poly quilted or Tricot Kasha lining
- Reinforced slash pockets
- Snap or zipper front/Inside pocket available/
Machine washable
- Any combination of Pro-Satin/Oxford colors/Taslan with
your choice of stretch nylon knit trim, lining and collar
type can be ordered in any Adult, Tall and Youth sizes

- **For complete custom order information, see pgs 90-97.**
- Approximate delivery: 3-4 weeks (allow extra time
during holiday season)



**SIZES: XS - 7XL / TALL: L - 7XL /
YOUTH: YS - YL**

CUSTOM OPTIONS | NYLON JACKETS

CUSTOM ORDER COLORS

PRO-SATIN



OXFORD



*LIMITED QUANTITY AVAILABLE

TASLAN **NEW!**



CUSTOM ORDER INSERTS, COLLARS AND HOODS

Available on custom order nylon jackets in Adult, Tall and Youth sizes.



A. STAND-UP KNIT COLLAR



B. KNIT BYRON COLLAR



K. NYLON BYRON COLLAR



L. V-NECK



M. CREW NECK



N. LINED HOOD



O. NYLON SAILOR COLLAR (W/ OR W/O BRAID, MITERED OR CROSS-OVER)



G. NYLON ZIPPER HOOD



5. KNIT SHOULDER INSERT (NYLON JACKET ONLY)

CUSTOM ORDER FORM | JACKETS & OUTERWEAR

OFFICE USE ONLY: Date Received: _____ Date Entered: _____

(Do not use for custom fleece job shirts)

PLEASE COMPLETE THIS FORM ENTIRELY AND FAX, E-MAIL, or MAIL BACK TO GAME. YOU MAY ALSO FILL OUT THIS FORM ONLINE AT www.GAMESPORTSWEAR.com.

BILL TO:
 PO# _____
 Cust. # _____ Cust. Name _____
 Address _____
 Address _____
 City/State/Zip _____
 Phone _____ Fax _____
 Email _____

SHIP TO:
 Previous Order # _____
 Cust. Name _____
 Address _____
 Address _____
 C/O _____
 City/State/Zip _____
 Phone _____ Fax _____

SEE COLOR CHART FOR COLOR #'s

Style: Number(#) and Name _____ (Ex: 5000, Varsity Jacket)

Body (select one): Wool Leather Body Color/# _____ (Ex: Red Wool #326)

Sleeve (select one): Wool Leather Vinyl Sleeve Color/#: _____ (Ex: Black Leather #2)

Pocket Trim (select one): Wool Leather Vinyl Pocket Trim Color # _____ Cording On Pocket trim _____
 Cording Color _____

Closure (select one): Snap Color: _____ Zipper Color: _____

Lining (select one): Quilt Kasha No lining Taffeta/Nylon IN-Zip™ for Taffeta/Nylon Linings (*In-Zip™ NOT available on Pullovers)

Trim: Knit Trim Pattern: _____ Knit Trim Base Color: _____ Stripe Color: _____ Feathering Color: _____

(NOTE: Knit trim color order: Base is always closest to the body, then stripe, then feathering that borders the stripe)



PATTERN 1



PATTERN 2



PATTERN 2A



PATTERN 3



PATTERN 4



PATTERN 5



PATTERN 6



PATTERN 7

(May choose 2 or 3 color combinations for pattern 7)

Collar or Hood (Select a Collar or Hood LETTER below): _____



A. STAND-UP KNIT COLLAR



B. KNIT BYRON COLLAR



C. WHITING KNIT COLLAR



D. ALL LEATHER BYRON COLLAR



E. LEATHER/WOOL OR WOOL/LEATHER BYRON COLLAR



K. BYRON LAY DOWN COLLAR (SPECIFY ALL WOOL OR ALL NYLON COLOR(S))



G. ZIPPERED HOOD (SPECIFY ALL WOOL OR ALL COLOR(S))



H. WOOL SAILOR COLLAR



I. MITERED SAILOR COLLAR



J. CROSS-OVER SAILOR COLLAR



P. ZIPPERED SAILOR COLLAR



Q. SCALLOPED ZIPPERED HOOD



N. NYLON LINED HOOD



R. TWO-TONE THREE-PANEL HOOD



F. FULL METAL ZIPPER AND WIND FLAP

Collar/Hood Color(s): Upside Color/#: _____ Wool Fleece Leather
 Downside Color/#: _____ Wool Fleece Leather

Braiding Color(s) on Collar/Hood: Mitered Crossover Color 1: _____ Color 2: _____ Color 3: _____ (see pg 111 for color options)

Shoulder Insert color (if applicable - check one below):



KNIT SHOULDER



501 (PARTIAL) INSERT



501 (FULL)



502 (PARTIAL)



502 (FULL)



503 (PARTIAL)



503 (FULL)



503 (PARTIAL) 3-COLOR



503 (FULL) 3-COLOR



5110 RAGLAN SLEEVE INSERT



5800 V INSERT



5700 (PARTIAL ONLY)



6000 WOOL LEATHER BODY INSERT



6100 ALL WOOL BODY INSERT

Shoulder Insert Color(s): Color/#1: _____ Color/#2: _____ Color/#3: _____

Size and Quantity: ADULT XS _____ S _____ M _____ L _____ XL _____ 2XL _____ 3XL _____ 4XL _____ 5XL _____ 6XL _____
 YOUTH S _____ M _____ L _____ TALL M _____ L _____ XL _____ 2XL _____ 3XL _____ 4XL _____ 5XL _____

Payment Type: Net 30 Terms COD* Credit Card CC#: _____ Exp: _____ CVV: _____

Credit Card Address: _____ Name on Credit Card: _____

Thank you for your order and for choosing GAME Sportswear!

Notice: Once garments are cut, cancellations cannot be accepted. A Custom Order Form must be filled out entirely to place any/all custom orders. RUSH orders (which are available ONLY when production time allows) may be subject to a rush fee and will be added to the price of the garment. We accept Visa, Mastercard, American Express, Discover, Certified Check or Money Order. *ALL COD & C.C. orders will require 50% deposit at time of order placement in the form of Credit Card, Certified Check or Money Order ONLY. Custom Orders CANNOT be returned, refunded, exchanged, or combined with stock orders.

OFFICE USE ONLY: SO#

CUSTOM ORDER COLORS

WOOL



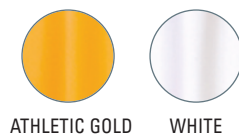
LEATHER



VINYL



FLEECE FOR HOOD/ SAILOR COLLARS (for varsity jackets only)



BRAIDING, CORDING AND BINDING

BRAIDING

Black
 Black / Gold / Black
 Black / Maroon / Black
 Black / Orange / Black
 Black / Purple / Black
 Black / Red / Black
 Black / White / Black
 Brown / Gold / Brown
 Brown / White / Brown
 Cardinal
 Cardinal / Black / Cardinal
 Cardinal / Gold / Cardinal
 Cream / Black / Cream
 Dark Green
 Dk. Green / Gold / Dk. Green
 Dk. Green / Navy / Dk. Green
 Dk. Green / Orange / Dk. Green
 Dk. Green / White / Dk. Green
 Dk. Green / Vegas Gold / Dk. Green

Dk. Green / Gold / Dk. Green
 Grey
 Grey / Black / Grey
 Grey / Kelly / Grey
 Grey / Maroon / Grey
 Grey / Red / Grey
 Grey / White / Grey
 Gold
 Gold / Black / Gold
 Gold / Cardinal / Gold
 Gold / Dk. Green / Gold
 Gold / Maroon / Gold
 Gold / Navy / Gold
 Gold / Royal / Gold
 Gold / White / Gold
 Kelly
 Kelly / Gold / Kelly
 Kelly / Navy / Kelly
 Kelly / White / Kelly

Maroon
 Maroon / Gold / Maroon
 Maroon / White / Maroon
 Navy
 Navy / Gold / Navy
 Navy / Grey / Navy
 Navy / Kelly / Navy
 Navy / Orange / Navy
 Navy / White / Navy
 Old Gold
 Old Gold / Navy / Old Gold
 Old Gold / White / Old Gold
 Orange
 Orange / Black / Orange
 Orange / Navy / Orange
 Orange / White / Orange
 Purple
 Purple / Gold / Purple
 Purple / White / Purple

Red
 Red / Black / Red
 Red / Gold / Red
 Red / Grey / Red
 Red / Navy / Red
 Red / Royal / Red
 Red / White / Red
 Royal
 Royal / Gold / Royal
 Royal / Red / Royal
 Royal / White / Royal
 Vegas Gold
 Vegas Gold / Black / Vegas Gold
 Vegas Gold / White / Vegas Gold
 Victory Blue
 Victory Blue / Gold / Victory Blue
 Victory Blue / Grey / Victory Blue
 Victory Blue / White / Victory Blue
 White

White / Black / White
 White / Brown / White
 White / Dk. Green / White
 White / Gold / White
 White / Grey / White
 White / Kelly / White
 White / Maroon / White
 White / Navy / White
 White / Old Gold / White
 White / Orange / White
 White / Purple / White
 White / Red / White
 White / Royal / White
 White / Victory Blue / White
 White / Vegas Gold / White

CORDING

Black
 Cardinal
 Dark Green
 Gold
 Grey
 Kelly
 Maroon
 Navy
 Orange
 Purple
 Red
 Royal
 Vegas Gold
 White

BINDING

Black
 Gold
 White

CUSTOM SHOULDER INSERT AND SLEEVE OPTIONS

Available on custom order nylon and wool jackets. Available in Adult, Tall and Youth sizes.



501 PARTIAL LEATHER SHOULDER INSERT 1-COLOR



501 FULL LEATHER SHOULDER INSERT 1-COLOR



502 PARTIAL LEATHER SHOULDER INSERT 2-COLOR



502 FULL LEATHER SHOULDER INSERT 2-COLOR



503 PARTIAL LEATHER SHOULDER INSERT 1-COLOR INSERT WITH 1-COLOR OVERLAY



503 FULL LEATHER SHOULDER INSERT 1-COLOR INSERT WITH 1-COLOR OVERLAY



LEATHER INSERT (1 COLOR OVERLAY, SPECIFIC FOR STYLE 5700)



503 PARTIAL LEATHER 3-COLOR INSERT



503 FULL LEATHER 3-COLOR INSERT



MULTI-COLOR LEATHER SLEEVES



5800 - V INSERT **NEW!**



5110 - RAGLAN SLEEVE INSERT **NEW!**



6000 - WOOL/LEATHER BODY INSERT **NEW!**



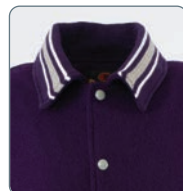
6100 - ALL WOOL BODY INSERT **NEW!**

CUSTOM WOOL COLLARS AND HOODS

Available on custom order wool, leather and vinyl jackets in Adult, Tall and Youth sizes.



A. STAND-UP KNIT COLLAR



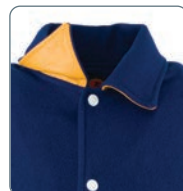
B. KNIT/WOOL BYRON COLLAR



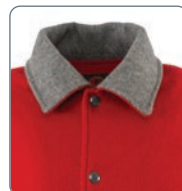
C. WHITING KNIT COLLAR



D. ALL LEATHER BYRON COLLAR



E. LEATHER/WOOL OR WOOL/LEATHER BYRON COLLAR



K. ALL WOOL BYRON COLLAR



F. ALL WOOL JACKET WITH METAL ZIPPER AND WIND FLAP **NEW!**



G. WOOL ZIPPER HOOD



H. WOOL SAILOR COLLAR



I. MITERED BRAIDING ON SAILOR COLLAR



J. CROSS-OVER BRAIDING ON SAILOR COLLAR



P. WOOL SAILOR COLLAR WITH ZIPPER



Q. SHALLOW SCALLOPED ZIPPERED HOOD



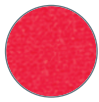
R. THREE-PANEL CLOSED HOOD

CUSTOM OPTIONS | WORK SHIRTS

CUSTOM FLEECE COLOR OPTIONS



HEATHER GREY



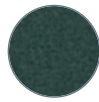
RED



BLACK



NAVY



DK GREEN



FLUORESCENT YELLOW
NEW!

CUSTOM ORDER WORK SHIRT OPTIONS

COLLAR OPTIONS



A. LAY DOWN SELF-MATERIAL COLLAR



B. LAY DOWN NAVY DENIM COLLAR



C. LAY DOWN BLACK DENIM COLLAR



D. LAY DOWN CANVAS COLLAR



E. TURTLENECK COLLAR

POCKET OPTIONS

- NO POCKETS
- SIDE SEAM POCKETS
- POUCH POCKET

ZIPPER OPTIONS

- BRASS ZIPPER
- MOLDED COLOR MATCH ZIPPER

REFLECTIVE TAPE ON SLEEVES



LIME-GREEN



ORANGE



SILVER

OCCUPATIONAL/PUBLIC SERVICE CLIP ART FOR EMBROIDERY

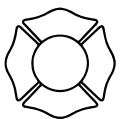
FIRE DEPT. MALTESE CROSSES



FC1



FC2



FC3



FC4



FC5



FC6

POLICE SHIELDS



PC1



PC2



PC3

MEDICAL



MC1



MC2



CUSTOM ORDER FORM | WORK SHIRTS

OFFICE USE ONLY: Date Received: _____ Date Entered: _____

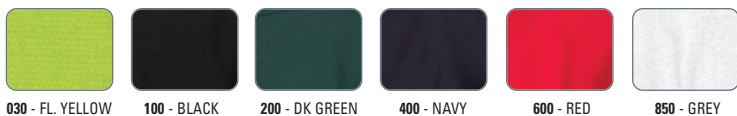
**PLEASE COMPLETE THIS FORM ENTIRELY AND FAX, E-MAIL, or MAIL BACK TO GAME.
YOU MAY ALSO FILL OUT THIS FORM ONLINE AT www.GAMESPORTSWEAR.com.**

PO# _____
Cust. # _____ Cust. Name _____
BILL TO: Address _____
Address _____
City/State/Zip _____
Phone _____ Fax _____
Email _____

Previous Order # _____
Cust. Name _____
SHIP TO: Address _____
Address _____
C/O _____
City/State/Zip _____
Phone _____ Fax _____

Style: 810 811 820-R 850-P 870-T 8070 8075 8080-T

Body (select color below): _____



Pocket Type (select one):

- No Pockets
 Side Seam Pockets
 Pouch Pocket

Elbow Patches: No Yes
(select fabric option) Canvas/Twill Denim
(select color option) Black Navy

Reflective Tape Color for Sleeves (if applicable - circle one):



Sleeve Pen Pocket: Yes No

Shoulder Mic Clips: Yes No

Circle a Collar (select collar below):



Special Options/Notes: _____

Size and Quantity: ADULT XS _____ S _____ M _____ L _____ XL _____ 2XL _____ 3XL _____ 4XL _____ 5XL _____
YOUTH S _____ M _____ L _____ TALL M _____ L _____ XL _____ 2XL _____ 3XL _____ 4XL _____ 5XL _____

Payment Type: Net 30 Terms COD* Credit Card CC#: _____ Exp: _____ CVV: _____

Credit Card Address: _____ Name on Credit Card: _____

Thank you for your order and for choosing GAME Sportswear!

Notice: Once garments are cut, cancellations cannot be accepted. A Custom Order Form must be filled out entirely to place any/all custom orders. RUSH orders (which are available ONLY when production time allows) may be subject to a rush fee and will be added to the price of the garment. We accept Visa, Mastercard, American Express, Discover, Certified Check or Money Order.

*ALL COD & C.C. orders will require 50% deposit at time of order placement in the form of Credit Card, Certified Check or Money Order ONLY.

Custom Orders CANNOT be returned, refunded, exchanged, or combined with stock orders.

(OFFICE USE ONLY): SO#

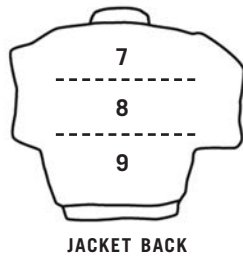
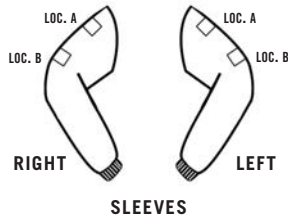
CUSTOM ORDER FORM | EMBELLISHMENT



Style #(s) _____ Date Received _____ Customer PO# _____
 Garment Color(s) _____ Date Entered _____ Reorder Yes No
 _____ Customer # _____ Previous Order # _____
 # of Pieces Per Style _____ Contact Name _____ Previous Invoice # _____
 _____ Phone _____
 _____ Fax _____
 E-mail _____

For Office Use Only (SO#)

PLEASE COMPLETE THIS FORM WITH ALL DECORATION REQUIREMENTS THAT APPLY AND FAX, E-MAIL, or MAIL BACK TO GAME.



1. RIGHT CHEST (select one) Embroidery Chenille Twill Drop-In ID _____
 Artwork Size _____ Font _____ Color Sequence _____
 Text/Logo Line 1 _____ Arched Rev. Arch Straight Other _____
 Text/Logo Line 2 _____ Arched Rev. Arch Straight Other _____
 Text/Logo Line 3 _____ Arched Rev. Arch Straight Other _____

2. LEFT CHEST (select one) Embroidery Chenille Twill Drop-In ID _____
 Artwork Size _____ Font _____ Color Sequence _____
 Text/Logo Line 1 _____ Arched Rev. Arch Straight Other _____
 Text/Logo Line 2 _____ Arched Rev. Arch Straight Other _____
 Text/Logo Line 3 _____ Arched Rev. Arch Straight Other _____

3. FULL FRONT (select one) Embroidery Chenille Twill Drop-In ID _____
 Artwork Size _____ Font _____ Color Sequence _____
 Text/Logo Line 1 _____ Arched Rev. Arch Straight Other _____
 Text/Logo Line 2 _____ Arched Rev. Arch Straight Other _____
 Text/Logo Line 3 _____ Arched Rev. Arch Straight Other _____

4. RIGHT SLEEVE Loc. A Loc. B Embroidery Twill Felt Chenille Connected or Individual Lettering
 Artwork Size _____ Font _____ Color Sequence _____
 Text/Logo Line 1 _____ Arched Straight
 Text/Logo Line 2 _____ Arched Straight

5. LEFT SLEEVE Loc. A Loc. B Embroidery Twill Felt Chenille Connected or Individual Lettering
 Artwork Size _____ Font _____ Color Sequence _____
 Text/Logo Line 1 _____ Arched Straight
 Text/Logo Line 2 _____ Arched Straight

6. BYRON COLLAR (LOC. 6C) - SAILOR COLLAR/ZIPPER HOOD (LOC. 6D) (select one) Loc. 6C Loc. 6D
 (select one) Embroidery Twill Felt Chenille Connected or Individual Lettering Drop-In ID _____
 Artwork Size _____ Font _____ Color Sequence _____
 Text/Logo Line 1 _____ Arched Rev. Arch Straight Other _____
 Text/Logo Line 2 _____ Arched Rev. Arch Straight Other _____

7. UPPER BACK (select one) Embroidery Twill Felt Chenille Connected or Individual Lettering Drop-In ID _____
 Artwork Size _____ Font _____ Color Sequence _____
 Text/Logo Line 1 _____ Arched Rev. Arch Straight Other _____

8. MIDDLE BACK (select one) Embroidery Twill Felt Chenille Connected or Individual Lettering Drop-In ID _____
 Artwork Size _____ Font _____ Color Sequence _____
 Text/Logo Line 1 _____ Arched Rev. Arch Straight Other _____
 Text/Logo Line 2 _____ Arched Rev. Arch Straight Other _____

9. LOWER BACK (select one) Embroidery Twill Felt Chenille Connected or Individual Lettering Drop-In ID _____
 Artwork Size _____ Font _____ Color Sequence _____
 Text/Logo Line 1 _____ Arched Rev. Arch Straight Other _____
 Text/Logo Line 2 _____ Arched Rev. Arch Straight Other _____

10. POCKETS (select one) 10-PR (right pocket) 10-PL (left pocket)
 (select one) Embroidery Chenille Twill Drop-In ID _____
 Artwork Size _____ Font _____ Color Sequence _____
 Text/Logo Line 1 _____ (select one) Above Pocket Below Pocket

Customer will be supplying chenille GAME will be supplying chenille
 Please attach any additional comments, notes, team rosters and/or specifications.

THANK YOU FOR YOUR ORDER AND FOR CHOOSING GAME SPORTSWEAR.

FIND US ON: f t i

PAYMENT TYPE:

- NET 30 TERMS
- COD
- CREDIT CARD - Credit Card #:

EXP Date: _____

CVV# _____









Credit Card Address: _____

Name on Credit Card: _____

				Black - stock	Blue - custom	🇺🇸 - Made in USA		
214	The Hydro-Wick Deluxe Tee NEW LOWER PRICE	28	1320E	The Econo Black Bottom Bomber Jacket.....	10	5700 The MVP Wool/Leather Jacket with Shoulder Inserts 🇺🇸	81	
235R	Ventilated Deluxe Tee with Segmented Reflective Tape.....	26	1333	The Navigator Jacket	12	5800 The Wool with V-Leather Insert Jacket 🇺🇸.....	86	
260E	The 100% Polyester Econo Tee NEW FOR 2022	27	1340	The Rain Jacket	21	6000 The Wool Leather with Body Insert Jacket 🇺🇸.....	87	
275R	GAME-Wick™ Two-Tone Class 3 Tee	28	1350	The 6-in-1 Jacket	16	6100 The All-Wool with Special Insert Jacket 🇺🇸.....	87	
500W	The Ladies' Fit Varsity Jacket 🇺🇸	82	1355	The Black Bottom 6-in-1 Jacket.....	17	7750	The Evoke Soft Shell Jacket	65
501	The Winner Wool Jacket - 1-Color Shoulder Insert 🇺🇸	85	1370	The Municipality Bomber Jacket	13	8020-D	The Defender Work Shirt.....	54
501L	The Winner Wool Jacket - 1-Color Shoulder Insert with Leather Sleeves 🇺🇸	85	1385	Two-Tone Black Bottom Bomber Jacket.....	14	8025-T	The Responder Work Shirt	52
502	The Champ Wool Jacket - 2-Color Shoulder Insert 🇺🇸	85	1390	The G-Clipse Bomber Jacket	42	8070	The Firefighter's Canvas Collar Work Shirt	58
502L	The Champ Wool Jacket - 2-Color Shoulder Insert with Leather Sleeves 🇺🇸.....	85	1450	The Rain Pant	21	8070C	The Firefighter's Canvas Collar Work Shirt 🇺🇸	59
503	The Favorite Wool Jacket - 3-Color Shoulder Insert 🇺🇸	85	1555E	The Econo Black Bottom Rain Pant NEW FOR 2022	19	8075	The Firefighter's Full Zip Work Shirt with Lay Down Collar	56-57
503L	The Favorite Wool Jacket - 3-Color Shoulder Insert with Leather Sleeves 🇺🇸.....	85	1655E	The Econo Hi-Vis Rain Jacket NEW FOR 2022	19	8075C	The Firefighter's Full Zip Work Shirt with Lay Down Collar 🇺🇸	59
510W	The Ladies' Fit Envoy Jacket 🇺🇸	82	1865E	The Class 3 Black Bottom Parka NEW FOR 2022	11, 20	8080-T	The Firefighter's Full Zip Turtleneck.....	56-57
520W	The Ladies' Fit JV Jacket 🇺🇸	82	2201	The Black Bottom Hi-Vis Tee	29	8080-TC	The Firefighter's Full Zip Turtleneck 🇺🇸.....	59
555	The Stadium Blanket 🇺🇸	86	2255	The Foreman Hi-Vis Polo	30	8210	Solid Hi-Vis Hoodie.....	24
810	The Firefighter's Work Shirt 🇺🇸.....	50	2275	The Hi-Vis Polo.....	31	8260	The Maintenance Hoodie	25
810C	The Firefighter's Work Shirt 🇺🇸.....	59	2350	The Patrolman Polo	31	8270	The Patriot Open Bottom Work Shirt..	55
811	The Firefighter's Work Shirt without Denim	53	3100	The Yukon 3-in-1 Parka	70	8270C	The Patriot Open Bottom Work Shirt 🇺🇸	59
811C	The Firefighter's Work Shirt without Denim 🇺🇸	59	3555	The Rescue Jacket	15	8310E	The 100% Polyester Econo Crew Neck Sweatshirt NEW FOR 2022	24
825	The Mack Hi-Vis Hoodie	25	4400	The Ultimate Year Round Protector Jacket	20	8525	The Hooded Work Shirt NEW FOR 2022	49
865E	The Econo Hoodie with Segmented Reflective Tape.....	22	4750	The Express Jacket	46	8550E	The No Zipper Econo Hoodie NEW FOR 2022	22
870-T	The Firefighter's Zip Turtleneck 🇺🇸.....	51	4970	The Colorado Coat	60	8755	G-Clipse Survivor Work Shirt..23, 43, 58	
870-TC	The Firefighter's Zip Turtleneck 🇺🇸.....	59	5000	The Varsity Jacket 🇺🇸	68, 74-75	8775	G-Clipse Reflective Hoodie	44
1221-J	The Bravest Diamond Quilt Jacket	63	5000C	The Varsity Jacket 🇺🇸	80, 86	9250	The Leader Enhanced Visibility Bomber Jacket NEW FOR 2022	45
1220-JUS	The Bravest Diamond Quilt Jacket 🇺🇸	62	5050	The Stadium Surcoat 🇺🇸	81	9400	The Three Seasons Jacket.....	66-67
1222-V	The Finest Diamond Quilt Vest	64	5100	The Envoy Jacket 🇺🇸	84	9450	The Commander Bomber Jacket.....	46
1250	The Icon Quilted Chore Coat.....	61	5110	The Precision Award Jacket 🇺🇸	86	9600	The Vermont Parka	69
1275	The Hi-Vis Quilted Jacket	14	5150	The Stadium Surcoat 🇺🇸	84	I-35E	The Econo Work Zone Vest	34, 40-41
			5180	The All-Wool Award Jacket 🇺🇸	84	I-44	The Surveyor Vest.....	35
			5200	The JV Wool/Vinyl Jacket 🇺🇸	76			
			5200C	The JV Wool/Vinyl Jacket 🇺🇸	83			
			5250	The Stadium Surcoat 🇺🇸	81			
			5500	The Pro Wool/Leather Jacket 🇺🇸	80			
			5510	The Pro Wool/Vinyl Jacket 🇺🇸	83			
			5610	The Texas Special Wool/Vinyl Jacket 🇺🇸.....	83			

I-65	The Econo-Safety Mesh Vest32	OKA	The Oxford Award Jacket 88-89	PSKAS	The Big League Pro-Satin Jacket 88-89
I-70	The Econo-Safety Polyester Vest33	OKA-I	The All-Star Oxford Insert Jacket 88-89	PSKA-Z	The Zipper Pro-Satin Jacket 88-89
I-84	The D.O.T. 100% Polyester Woven Fabric Vest NEW LOWER PRICE36	OKA-Z	The Zipper Oxford Jacket 88-89	PSQA	The GAME Pro-Satin Jacket  ..88-89
I-85	The Mesh D.O.T. Vest with Pockets NEW LOWER PRICE37	OQA	The Oxford Award Jacket 88-89	PSQA-I	The All-Star Pro-Satin Jacket 88-89
I-495E	The 5-Point Class 3 Breakaway Econo Vest NEW FOR 202239	OQA-I	The All-Star Oxford Insert Jacket 88-89	PSQAS	The Big League Pro-Satin Jacket 88-89
I-678E	The Econo Class 3 Vest38	OQA-Z	The Zipper Oxford Jacket 88-89	PSQA-Z	The Zipper Pro-Satin Jacket 88-89
I-684	The 5-Point Breakaway Mesh Vest38	PSKA	The GAME Pro-Satin Jacket  ..88-89		
MA-1C	The Original Bomber Jacket  ..88-89	PSKA-I	The All-Star Pro-Satin Insert Jacket 88-89		

Additional Custom Styles Found Online:

441C	The Coach's Jacket online	603	The GAME Hooded Pullover  ..online	653	The Grand Slam Hooded Pullover online
601	The All-Pro Pullover Stand-Up Collar online	651	The Grand Slam Pullover Stand-Up Collar online	850-P	The Firefighter's Work Shirt with Pouch online
602	The All-Pro Pullover Lay Down Collar online	652	The Grand Slam Pullover Lay Down Collar online		

SIZE CHART*

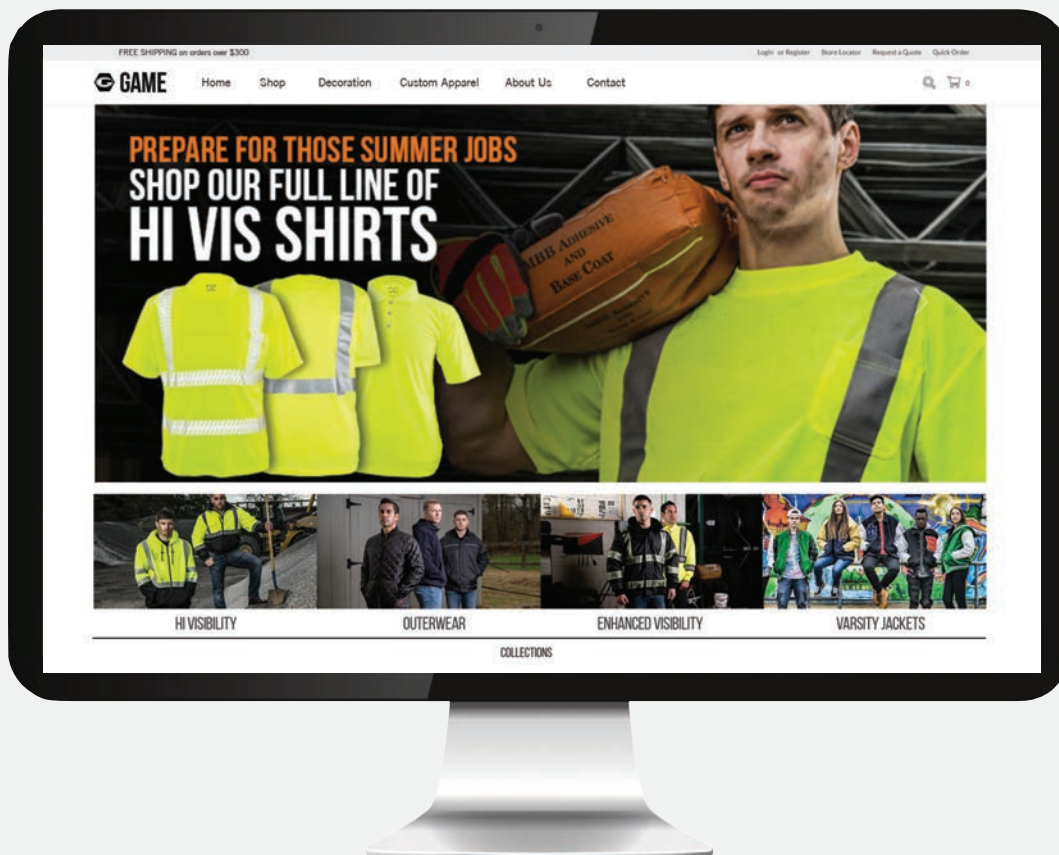
		XXS	XS	SM	MED	LG	XL	2XL	3XL	4XL	5XL	6XL
ADULT	Chest	26-28	30-32	34-36	38-40	42-44	46-48	50-52	54-56	58-60	62-64	66-68
	Sleeve	28	32	33	34	35	36	37	38	38	38	38
	Waist	—	24-26	28-30	32-34	36-38	40-42	44-46	48-50	52-54	56-58	60-62
LADIES		—	0-2	4-6	8-10	12-14	16-18	20-22	24-26	—	—	—
	Chest	—	31-33	33-35	36-38	38-40	41-43	44-46	47-49	—	—	—
	Waist	—	25-27	26-29	29-31	31-33	33-35	35-37	37-39	—	—	—
YOUTH		2T-3T	4T-5T	6-8	10-12	12-14	—	—	—	—	—	—
	Chest	20-22	23-25	26-27	28-29	30-31	—	—	—	—	—	—
	Sleeve	20	22	24	26	28	—	—	—	—	—	—
	Waist	—	—	22-23	24-25	26-27	—	—	—	—	—	—

* The above garment sizes reflect individual body measurements.

TAKE IT TO THE NEXT LEVEL WITH GAME ONLINE

Are you an Official
Registered Dealer for
GAME ONLINE?

If not, visit www.GAMESPORTSWEAR.com today and submit an online access form for your Dealer Access Login. Then log in and check out what your missing!



Here are some of the benefits you could be enjoying today:

- Exclusive Web Pricing: Including NO upcharges for sizes 2XL - 6XL and Talls!
- Complete product details for all stock and custom garments
- View our complete custom in-house decoration options
- View your order history for easy reordering
- Place orders 24/7 from real time inventory on your schedule
- Download catalogs and custom order forms when you need them
- Exclusive discounts via Email, Facebook, and Twitter ONLY
- Faster service

We offer exclusive deals on Facebook and Twitter. "Like Us" today and find out what's happening at GAME and how you could be saving more!

Like us on Facebook and follow us on Twitter and you could receive a special gift from GAME!



GAME 2022

We are looking forward to **2022** with tremendous optimism and high expectations for great achievements!

2022 will see many new advances in our E-Commerce capabilities, updates to our inhouse ERP, and a brand new Customer Loyalty Rewards Program.



GAME READY

Our enhanced Logistics & Purchasing Department ensures we maintain a deep inventory of our key products year round as the world recovers from COVID related delays.



FASTEST DELIVERY

GAME offers the fastest production turnaround in the industry on our **Proudly Made in the USA** stock, **Custom Varsity Jackets & Custom Apparel**.



ONE STOP SHOP

All your decoration needs can now be handled at **GAME**.

Our **Design and Embellishment Department** stands ready to service **ALL** your decoration needs!



TOP QUALITY

Starting with the highest quality materials and built for performance, we are committed to providing you unmatched quality --- at an amazing price.



Thank you for your continued loyalty! We are proud to be your partner and look forward to a continued partnership in the many years ahead!



GAME

EST. 1975

TWO PRODUCT LINES

ONE

GREAT BRAND

© 2022 GAME Sportswear, LTD. Written product descriptions, and pictures found in the catalog are a general representation to be used as a guide for color and sizing purposes. Fabric swatches or samples should be requested when exact color and sizes are required. Logos found on garments throughout this catalog are for illustration only; they do not imply endorsement of the school, company, or organization represented, and are not available for sale as all logos are property of their trademark owner.

ASI 55752 PPAI 111401
SAGE 50417 UPIC GAME001